



MATERIALS

Lion on the Floor Version:

Bernat® Blanket Stripes™ (10.5 oz/300 g; 220 yds/201 m)
Contrast A Sand Dunes (76022) **5 balls or 1016 yds/929 m**
Bernat® Blanket™ (10.5 oz/300 g; 220 yds/201 m)
Contrast B Sand (10014) **3 balls or 564 yds/515 m**

Elephantastic Version:

Bernat® Baby Blanket Stripes™ (10.5 oz/300 g; 220 yds/201 m)
Contrast A Seaglass (60009) **5 balls or 944 yds/863 m**
Bernat® Blanket™ (10.5 oz/300 g; 220 yds/201 m)
Contrast B Pale Gray (10046) **4 balls or 734 yds/671 g**

Sizes U.S. K/10½ (6.5 mm) and U.S. L/11 (8 mm) crochet hooks **or size needed to obtain gauge**. 3 queen size pillows 20 x 26" [51 x 66 cm].
 Stitch markers.

 CROCHET | SKILL LEVEL: **EASY**

ABBREVIATIONS

Approx = Approximately
Beg = Begin(ning)
Ch = Chain(s)
Cont = Continue
Dc = Double crochet
Hdc = Half double crochet
Pat = Pattern
Rem = Remaining
Rep = Repeat
Rnd(s) = Round(s)
RS = Right side

Sc = Single crochet
Sc2(3)tog = Draw up a loop in each of next 2(3) indicated spaces. Yoh and draw through all loops on hook
Sl st = Slip stitch
Sp = Space
St(s) = Stitch(es)
Tog = Together
WS = Wrong side
Yoh = Yarn over hook

MEASUREMENTS

Approx 26 x 60" [66 x 152.5 cm].

GAUGES

7 sc and 8 rows = 4" [10 cm] with larger hook.

9 sc and 10 rows = 4" [10 cm] with smaller hook.

INSTRUCTIONS

Both Versions:

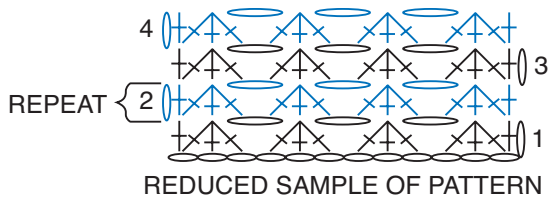
FRONT AND BACK (make 2 alike)
 With larger hook and A, ch 48.

Bottom Section: 1st row: (RS). 1 sc in 2nd ch from hook. Sc3tog, inserting hook first into same ch as previous sc, then into each of next 2 ch. *Ch 1. Sc3tog, inserting

hook first into same ch as last leg of previous sc3tog, then into each of next 2 ch. Rep from * to end of chain. 1 sc in same ch as last leg of previous sc3tog. Turn.

2nd row: Ch 1. 1 sc in first sc. Sc3tog, inserting hook first into same place as previous sc, then into top of next sc3tog, then into next ch-1 sp. *Ch 1. Sc3tog, inserting hook first into same place as last leg of previous sc3tog, then into top of next sc3tog, then into next ch-1 sp. Rep from * to end of row, working 3rd leg of last sc3tog into last sc. 1 sc in same sc as last leg of last sc3tog. Turn.

Rep 2nd row for Trinity Stitch Pat. (See diagram).



STITCH KEY

○ = chain (ch)

⊕ = single crochet (sc)

⊕⊕⊕ = single crochet 3 together (sc3tog)

Cont in pat until work from beg measures approx 20" [51 cm], ending on a WS row.

Next row: (RS). Ch 1. 1 sc in each st and ch-1 sp to end of row. Turn. Place marker at end of row.

Next row: Ch 1. 1 sc in each sc to end of row. Turn.

Middle Section: Next row: Ch 1. 1 sc in first sc. Sc3tog, inserting hook first into same st as previous sc, then into each of next 2 sc. *Ch 1. Sc3tog, inserting hook first into same sc as last leg of previous sc3tog, then into each of next 2 sc. Rep from * to last sc. 1 sc in same sc as last leg of previous sc3tog. Turn.

Next row: Ch 1. 1 sc in first sc. Sc3tog, inserting hook first into same place as previous sc, then into top of next sc3tog, then into next ch-1 sp. *Ch 1. Sc3tog, inserting hook first into same place as previous sc, then into top of next sc3tog, then into next ch-1 sp. Rep from * to end of row, working 3rd leg of last sc3tog into last sc. 1 sc in same sp as last leg of last sc3tog. Turn.

Rep last row for Trinity Stitch Pat. Cont in pat until same number of rows as Bottom Section has been worked, ending on a WS row. Break A. Join B.

Next row: (RS). With B, ch 1. 1 sc in each st and ch-1 sp to end of row. Turn. Place marker at end of row.

Next row: Ch 1. 1 sc in each sc to end of row. Turn.

Upper Section: Cont even in sc until work from last marker measures approx 20" [51 cm], ending on a WS row. Fasten off.

Create pillow dividers: Place Front and Back tog with WS facing each other and edges aligned. With Front facing and larger hook, join A with sl st at

edge of work at 1st marked row (between Bottom and Middle Sections). Join Front to Back along marked row using sl st *through both thicknesses*. Rep for 2nd marked row (between Middle and Top Sections).

Join edges: With Front facing and larger hook, join B with sl st through both thicknesses at 2nd marked row (between Middle and Top Sections).

1st rnd: (RS). Ch 1. *Working through both thicknesses*, (work sc evenly to corner. 3 sc in corner) twice. Insert pillow form in Upper Section. Work sc evenly to same marked row as last sl st. Join A. Break B. With A, cont working sc *through both thickness* around entire edge, having 3 sc in each corner and inserting pillow forms in Middle and Lower Sections before joining last edge. Join with sl st to first sc. Fasten off.

Lion Version only:

Mane

With RS facing and larger hook, join A with sl st to back loop only of first sc of "Join edges".

Fringe row: (RS). Ch 1. *Sl st in back loop only of next sc. Draw up a loop 10" [25.5 cm] long. Twist loop 25 times. Sl st in same st, allowing twisted loop to coil around itself. Rep from * around entire Upper section, ending at color change of "Join edges". Fasten off.

Ears (make 2)

Inner Ear: With smaller hook and medium brown section of A yarn, ch 2.

1st row: (RS). (1 sc. 1 hdc. 3 dc. 1 hdc. 1 sc) all in 2nd ch from hook. Turn.

2nd row: Ch 1. 1 sc in each of first 2 sts. 2 sc in next dc. 3 sc in next dc. 2 sc in next dc. 1 sc in next dc. Turn.

3rd row: Ch 1. 1 sc in each of first 4 sts. 2 sc in next sc. 3 sc in next sc. 2 sc in next sc. 1 sc in each of next 4 sts. Turn.

4th row: Ch 1. 1 sc in each of first 6 sts. 2 sc in next sc. 3 sc in next sc. 2 sc in next sc. 1 sc in each of next 6 sts.

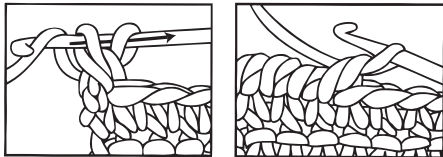
Fasten off.

Outer Ear: With B, work as for Inner Ear.

Join Ears: With WS facing each other, place Inner and Outer Ears tog. With Inner Ear facing and smaller hook, join B with sl st to first sc.

1st row: (RS). Ch 1. *Working into back loops only of Inner Ear and both loops of Outer Ear*, 1 sc in each of first 8 sc. 2 sc in next sc. 3 sc in next sc. 2 sc in next sc. 1 sc in each of next 8 sc. **Do not** turn.

2nd row: (RS). Ch 1. *Working from left to right instead or right to left as usual*, work 1 reverse sc in each sc to end of row. Fasten off.



Tail

Note: Tail is worked in a continuous spiral. **Do not** join rnds. Place marker at beg of rnd and move marker up each subsequent rnd.

With smaller hook and B, ch 16. Join with sl st to first ch to form ring, being careful not to twist.

1st rnd: Ch 1. 1 sc in each ch around. 16 sc.

2nd rnd: 1 sc in each sc around. Rep last rnd until work from beg measures 10" [25.5 cm].

Next rnd: *Sc2tog. 1 sc in each of next 2 sc. Rep from * around. 12 sc.

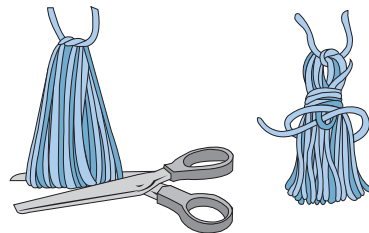
Next rnd: 1 sc in each sc around. Rep last rnd until work from beg measures 15" [38 cm].

Next rnd: *Sc2tog. 1 sc in next sc. Rep from * around. 8 sc.

Next rnd: 1 sc in each sc around. Rep last rnd until work from beg measures 20" [51 cm].

Next rnd: *Sc2tog. Rep from * around. 4 sc. Fasten off.

Tassel: Wind A around a piece of cardboard 8" [20.5 cm] wide 20 times. Tie through loops securely at one end. Cut across other end. Wrap yarn 6 times around Tassel 2" [5 cm] down from tied end. Fasten securely. Sew Tassel to end of Tail.



Nose

With smaller hook and dark brown section of A yarn, ch 2.

1st rnd: (1 sc. 1 hdc. 1 dc. 1 hdc) 3 times in 2nd ch from hook. Join with sl st to first sc. Fasten off.

Finishing: Sew Ears, Nose and Tail to Pillow as seen in picture. With dark brown section of A yarn, embroider eyes and mouth with chain st embroidery as seen in picture.

Elephant Version only:

Ears (make 2)

With smaller hook and B, ch 2.

1st rnd: 8 sc in 2nd ch from hook. Join with sl st to first sc. 8 sc.

2nd rnd: Ch 1. 2 sc in each sc around. Join with sl st to first sc. 16 sc.

3rd rnd: Ch 1. 2 sc in first sc. 1 sc in next sc. *2 sc in next sc. 1 sc in next sc. Rep from * around. Join with sl st to first sc. 24 sc.

4th rnd: Ch 1. 2 sc in first sc. 1 sc in each of next 2 sc. *2 sc in next sc. 1 sc in each of next 2 sc. Rep from * around. Join with sl st to first sc. 32 sc.

5th rnd: Ch 1. 2 sc in first sc. 1 sc in each of next 3 sc. *2 sc in next sc. 1 sc in each of next 3 sc. Rep from

* around. Join with sl st to first sc. 40 sc.

6th rnd: Ch 1. 2 sc in first sc. 1 sc in each of next 4 sc. *2 sc in next sc. 1 sc in each of next 4 sc. Rep from * around. Join with sl st to first sc. 48 sc.

7th rnd: Ch 1. 2 sc in first sc. 1 sc in each of next 5 sc. *2 sc in next sc. 1 sc in each of next 5 sc. Rep from * around. Join with sl st to first sc. 56 sc.

8th rnd: Ch 1. 2 sc in first sc. 1 sc in each of next 6 sc. *2 sc in next sc. 1 sc in each of next 6 sc. Rep from * around. Join with sl st to first sc. 64 sc.

9th rnd: Ch 1. 2 sc in first sc. 1 sc in each of next 7 sc. *2 sc in next sc. 1 sc in each of next 7 sc. Rep from * around. Join with sl st to first sc. 72 sc.

10th rnd: Ch 1. 2 sc in first sc. 1 sc in each of next 8 sc. *2 sc in next sc. 1 sc in each of next 8 sc. Rep from * around. Join with sl st to first sc. 80 sc.

11th rnd: Ch 1. 2 sc in first sc. 1 sc in each of next 9 sc. *2 sc in next sc. 1 sc in each of next 9 sc. Rep from * around. Join with sl st to first sc. 88 sc.

12th rnd: Ch 1. 2 sc in first sc. 1 sc in each of next 10 sc. *2 sc in next sc. 1 sc in each of next 10 sc. Rep from * around. Join with sl st to first sc. 96 sc.

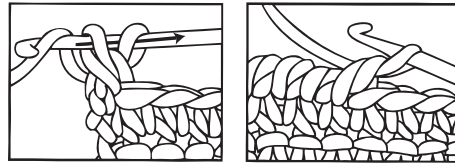
13th rnd: Ch 1. 2 sc in first sc. 1 sc in each of next 11 sc. *2 sc in next sc. 1 sc in each of next 11 sc. Rep from * around. Join with sl st to first sc. 104 sc.

14th rnd: Ch 1. 2 sc in first sc. 1 sc in each of next 12 sc. *2 sc in next sc. 1 sc in each of next 12 sc. Rep from * around. Join with sl st to first sc. 112 sc. **Do not** fasten off. Fold work in half with beg of rnd at fold.

Next row: Ch 1. *Working through both thicknesses*, 2 sc in first sc. 1 sc in each of next 13 sc. *2 sc in next sc. 1 sc in each of next 13 sc. Rep from * twice more. 60 sc.

Next row: Ch 1. *Working from left to right instead or right to left as usual*, work 1 reverse sc in each sc to end of row. Fasten off.

Reverse sc diagram



Trunk

See diagram on page 5.

With smaller hook and B, ch 13.

1st row: (RS). 1 sc in 2nd ch from hook. 1 sc in each sc to end of chain. 12 sc.

Drop hook from last loop to be picked up later. Join separate strand of yarn with sl st to first sc of 1st row. Ch 3. Fasten off. Turn.

2nd row: (WS). Pick up dropped loop from 1st row. Ch 4. 1 sc in 2nd ch from hook. 1 sc in each of next 2 ch. 1 sc in each of next 12 sc. 1 sc in each of next 3 ch. 18 sc. Drop loop from hook to be picked up

later. Join separate strand of yarn with sl st to first sc of 2nd row. Ch 2. Fasten off. Turn.

3rd row: Pick up dropped loop from 2nd row. Ch 3. 1 sc in 2nd ch from hook. 1 sc in next ch. 1 sc in each of next 18 sc. 1 sc in each of next 2 ch. 22 sc. Turn.

4th and 5th rows: Ch 1. 2 sc in first sc. 1 sc in each sc to last sc. 2 sc in last sc. Turn. 26 sc.

6th row: Ch 1. 1 sc in each sc to end of row. Turn.

7th row: As 4th row. 28 sc.

8th row: As 6th row.

9th row: Ch 1. 2 sc in first sc. 1 sc in each of next 10 sc. Sc2tog. **Turn.** Leave rem sts unworked. 13 sc.

10th row: Ch 1. Sc2tog. 1 sc in each sc to end of row. Turn. 12 sc.

11th row: Ch 1. 1 sc in first sc. 1 sc in each of next 9 sc. Sc2tog. Turn. 11 sc.

12th row: Ch 1. Sc2tog. 1 sc in each of next 8 sc. 2 sc in last sc. Turn. 11 sc.

13th row: Ch 1. 1 sc in each sc to end of row. 11 sc. Turn.

Rep last row until work from beg measures approx. 24" (61 cm) ending on a WS row. Fasten off.

Trunk Hook: With RS facing and smaller hook, join B with sl st to 16th sc of 8th row.

9th row: (RS). Ch 1. Sc2tog. 1 sc in each of next 10 sc. 2 sc in last sc. Turn. 13 sc.

10th row: Ch 1. 1 sc in first sc. 1 sc in each of next 9 sc. Sc2tog. **Turn.** Leave rem st unworked. 11 sc.

11th row: Ch 1. Sc2tog. 1 sc in each sc to end of row. Turn. 10 sc.

12th row: Ch 1. 2 sc in first sc. 1 sc in each sc to end of row. Turn. 11 sc.

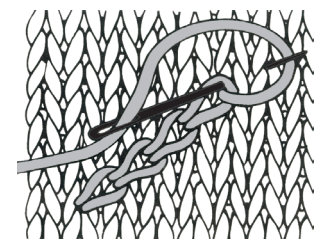
13th row: Ch 1. 1 sc in each sc to end of row. Turn. 11 sc.

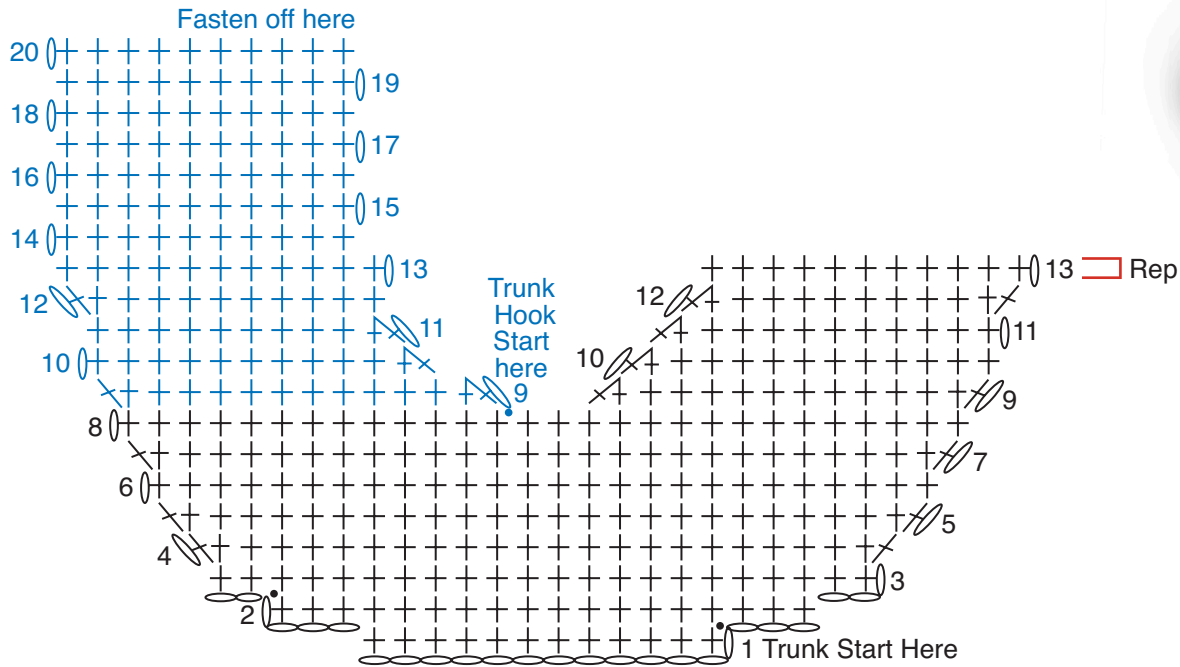
14th row: Ch 1. 1 sc first sc. 1 sc in each of next 9 sc. **Turn.** Leave rem st unworked. 10 sc.

15th to 20th rows: Ch 1. 1 sc in each sc to end of row. Turn. Fasten off.

Finishing: Sew Ears and Trunk to Pillow as seen in picture. With white section of A yarn, embroider eyes and mouth with chain st embroidery as seen in picture.

Chain Stitch embroidery





ELEPHANT TRUNK

STITCH KEY

- = chain (ch)
- = slip stitch (sl st)
- † = single crochet (sc)
- △ = single crochet 2 together (sc2tog)

