



CROCHET | SKILL LEVEL: **EASY**

ABBREVIATIONS

Approx = Approximately

Beg = Beginning

Ch = Chain(s)

Dc = Double crochet

Rep = Repeat

Rnd(s) = Round(s)

Sc = Single crochet

Sl st = Slip stitch

Sp(s) = Space(s)

St(s) = Stitch(es)

MEASUREMENTS

Approx 49" x 65" [124.5 x 165 cm].

GAUGE

7 dc and 4 rows = 4" [10 cm].

INSTRUCTIONS

Note: Blanket is worked in one piece in rounds from the center out.

With B, ch 33.

See diagram on page 2.

1st rnd: (RS). 3 dc in 5th ch from hook (counts as 1 dc, ch 1, 3 dc). (Ch 1. Skip next 3 ch. 3 dc in next ch) 6 times. Ch 1. Skip next 3 ch. [(3 dc. Ch 1) twice. 3 dc] in last ch. *Working along opposite side of foundation ch*, (Ch 1. Skip next 3 ch. 3 dc in next ch) 6 times. Ch 1. Skip next 3 ch. (3 dc. Ch 1. 2 dc) in last ch. Join A with sl st to top of 3rd ch of ch-4.

2nd rnd: With A, sl st to next corner ch-1 sp. Ch 1. (1 sc. Ch 3. 1 sc) in same sp as last sl st. Ch 3. *(1 sc in sp between next two 3-dc groups. Ch 3) 7 times.* [(1 sc. Ch 3. 1 sc) in next corner ch-1 sp. Ch 3] twice. Rep from * to * once. (1 sc. Ch 3) twice in last corner ch-1 sp. Join B with sl st to first sc.

3rd rnd: With B, sl st to first corner ch-3 sp. Ch 4 (counts as dc and ch 1). 3 dc in same sp as last sl st. *3 dc in each ch-3 sp to next corner ch-3 sp. (3 dc. Ch 1. 3 dc) in next corner ch-3 sp. Rep from * twice more. 3 dc in next ch-3 sp. 2 dc in first ch-3 sp. Join A with sl st to 3rd ch of beg ch-4.

MATERIALS

Bernat® Blanket™ (10.5 oz/300 g; 220 yds/201 m)

Contrast A Vintage White (10006) **2 balls or 375 yds/345 m**

Contrast B Pale Grey (10046) **3 balls or 510 yds/470 m**

Contrast C Dark Grey (10044) **3 balls or 490 yds/450 m**

Size U.S. L/11 (8 mm) crochet hook **or size needed to obtain gauge.**

4th rnd: With A, sl st to next corner ch-1 sp. Ch 1. (1 sc. Ch 3. 1 sc) in same sp as last sl st. Ch 3. [* (1 sc in sp between next two 3-dc groups. Ch 3.** Rep from * to next corner ch-1 sp. (1 sc. Ch 3. 1 sc) in next corner ch-1 sp. Ch 3] twice. Rep from * to ** to end of rnd. Join C with sl st to first sc.

5th rnd: With C, as 3rd rnd.

6th rnd: With A, as 4th rnd.

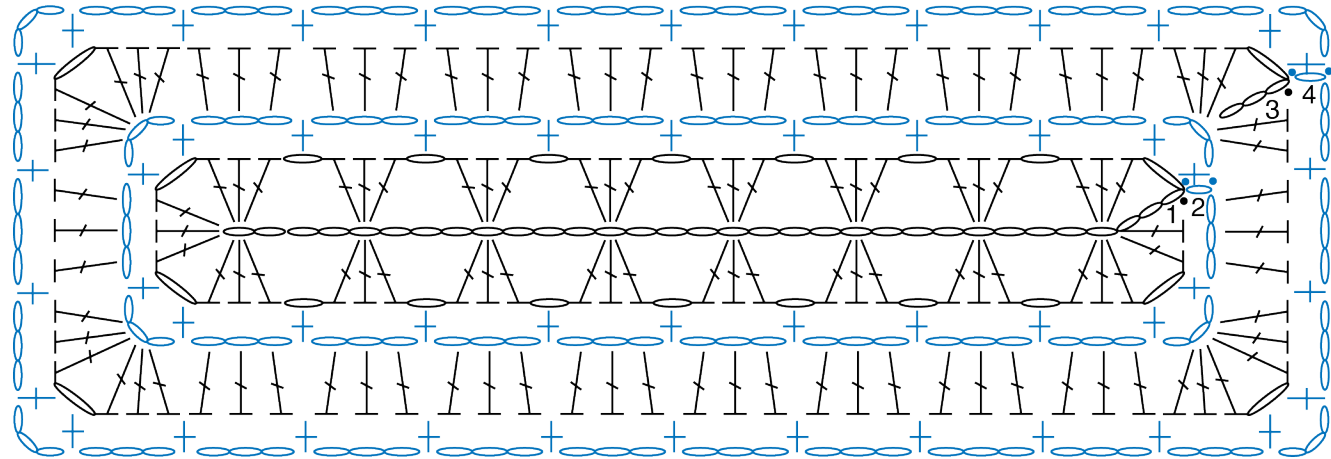
7th rnd: With C, as 3rd rnd.

8th rnd: With A, as 4th rnd.

9th rnd: With B, as 3rd rnd.

10th rnd: With A, as 4th rnd.

Rep 3rd to 10th rnds until longer side measures approx 65" [165 cm], ending on 3rd or 7th rnd. Fasten off.



STITCH KEY

- = chain (ch)
- = slip stitch (sl st)
- ⊕ = single crochet (sc)
- ⌈ = double crochet (dc)

