



Tiffany Brown
from Daisy Farm Crafts

Daisy Farm Crafts



SUPER BULKY



CROCHET | SKILL LEVEL: EASY

ABBREVIATIONS

Approx = Approximately

Beg = Begin(ning)

Ch = Chain(s)

Dc = Double crochet

Dcbp = Yoh and draw up a loop around post of next stitch at back of work, inserting hook from right to left. (Yoh and draw through 2 loops on hook) twice.

Dcftp = Yoh and draw up a loop around post of next stitch at front of work, inserting hook from right to left. (Yoh and draw through 2 loops on hook) twice

Pat = Pattern

Rep = Repeat

Rnd(s) = Round(s)

Sl st = Slip stitch

St(s) = Stitch(es)

Yoh = Yarn over hook

MEASUREMENTS

Approx 40½" x 52" [103 x 132 cm].

GAUGE

6 sts and 5 rows = 4" [10 cm] in Basketweave Pat.

INSTRUCTIONS

Note:

- The first dcftp or dcbp of a given row is worked around the second post in the row below, not the post that lines up under the turning ch.
- Ch 2 at beg of row is counted as turning ch.

MATERIALS

Bernat® Velvet Plus™ (10.5 oz/300 g; 78 yds/71 m)

Cream (56001)

9 balls

Size U.S. N/15 (10 mm) crochet hook **or size needed to obtain gauge.** Yarn needle.

Ch 64.

1st row: 1 dc in 4th ch from hook (counts 1 dc and turning ch). 1 dc in each ch to end of ch. Turn. 61 sts plus turning ch.

2nd row: Ch 2. Skip first st. *1 dcfp around each of the next 12 sts. 1 dcbp around each of the next 12 sts. Rep from * to last 12 sts. 1 dcfp around each of the last 12 sts. Work 1 dc into top of ch-2.

3rd row: Ch 2. Skip first st.*1 dcbp around each of the next 12 sts. 1 dcfp around each of the next 12 sts. Rep from * to last 12 sts. 1 dcbp around each of the last 12 sts. Work 1 dc into ch-2. Turn.

4th to 11th rows: Rep 2nd and 3rd rows 4 times.

12th row: As 3rd row.

13th row: As 2nd row.

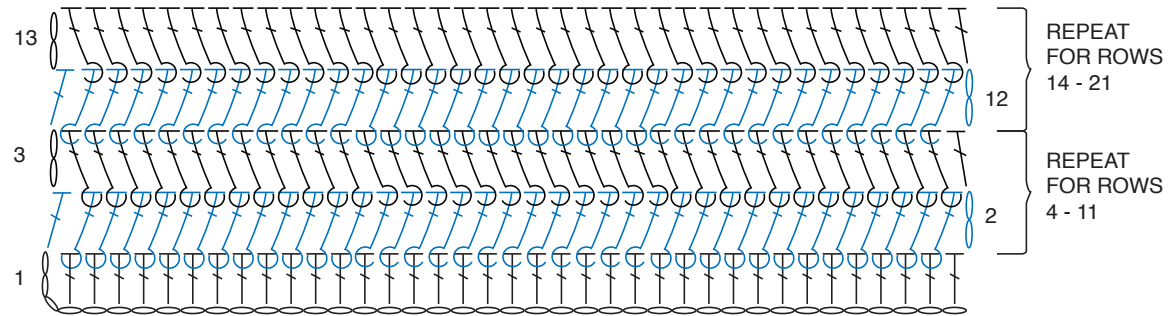
14th to 21st rows: Rep 12th and 13th rows 4 times.

Rep 2nd to 21st rows twice more.

Do not fasten off.

Border:

Ch 1. Work 1 dc into each st across top and bottom and evenly up and down sides, working 3 dc into each corner and maintaining gauge established in Throw.



REDUCED SAMPLE OF PATTERN

