



KNIT 1 SKILL LEVEL: EASY

ABBREVIATIONS

Alt = Alternate

Approx =
Approximately

Beg = Begin(ning)

Cont = Continue(ity)

Dec = Decrease

Inc = Increase

K = Knit

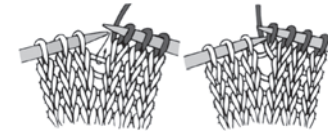
Kfb = Increase

1 stitch by knitting
into front and back of
next stitch

K2tog = Knit next

2 stitches together

M1 = Make 1 stitch
by picking up
horizontal loop lying
before next stitch
and knitting into
back of loop



P3tog = Purl next
3 stitches together

Rep = Repeat

RS = Right side

Ssk = Slip next
2 stitches knitwise
one at a time. Pass
them back on to left-
hand needle, then
knit through back
loops together

St(s) = Stitch(es)

Tog = Together

WS = Wrong side

MATERIALS

Bernat® Blanket™ (10.5 oz/300 g; 220 yds/201 m)

Contrast A Tan Pink (10898) **2 balls or 410 yds/375 m**

Bernat® Baby Blanket™ (10.5 oz/300 g; 220 yds/201 m)

Contrast B Strawberry Sprinkles (04871) **1 ball or 75 yds/68.5m**

Size U.S. 11 (8 mm) circular knitting needle 29" [73.5 cm] long **or size needed to obtain gauge.** Yarn needle. Small quantity of worsted weight black yarn for duplicate stitch embroidery.

MEASUREMENTS

Approx 36" x 40" [91.5 x 101.5 cm].

GAUGE

8 sts and 13 rows = 4" [10 cm] in stocking st.

INSTRUCTIONS

Notes:

- When working from chart, wind small balls of the colors to be used, one for each separate area of color in the design

- To change colors, wind the 2 colors around each where they meet, on WS, to avoid a hole.

BLANKET

Edging: With A, cast on 64 sts. **Do not** join. Working back and forth across needle in rows, proceed as follows:

Knit 4 rows (garter st), noting that 1st row is WS.

Inc row: K3. Kfb. (K7. Kfb) 7 times. K4. 72 sts.

Blanket Body: 1st row: (RS). Knit.
2nd row: K4. Purl to last 4 sts. K4.
 Rep these 2 rows until work from beg measures 12" [30.5 cm], ending on a WS row.

Chart I (shown right).

1st row: (RS). K28. Knit 1st row of Chart I across next 16 sts, reading row from right to left. K28.

2nd row: K4. P24. Purl 2nd row of Chart I across next 16 sts, reading row from left to right. P24. K4.

Keeping cont of Chart I, as placed in last 2 rows, work even until Chart I is complete.

Next row: (RS). With A, knit.

Next row: K4. Purl to last 4 sts. K4.
 Rep these 2 rows until work from beg measures 38½" [98 cm], ending on a WS row.

Edging: Dec row: (RS). K3. K2tog. (K7. K2tog) 7 times. K4. 64 sts.

Knit 4 rows (garter st).
 Cast off knitwise (WS).

FINISHING

Following Chart II and using black worsted weight yarn held double, work duplicate st to embroider Eyes, Nose, and Mouth.

Ears (make 2 each with A and B)
 Cast on 7 sts.

1st row: (RS). Knit.

2nd and alt rows: Purl.

3rd row: K3. M1. K1. M1. K3. 9 sts.

5th row: K4. M1. K1. M1. K4. 11 sts.

7th row: K5. M1. K1. M1. K5. 13 sts.

9th row: K6. M1. K1. M1. K6. 15 sts.

Beg on a purl row, work 7 rows even in stocking st.

Beg dec:

1st row: (RS). K1. ssk. Knit to last 3 sts. K2tog. K1.

2nd row: Purl.

3rd row: Knit.

4th row: Purl.

Rep last 4 rows twice more. 9 sts.

Next row: K1. ssk. Knit to last 3 sts. K2tog. K1.

Next row: Purl.

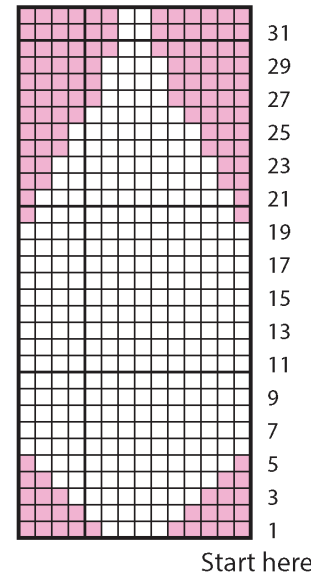
Rep last 2 rows once more. 5 sts.

Next row: K2tog. K1. ssk. 3 sts.

Next row: P3tog. Fasten off.

With WS tog, sew A Ear to B Ear.
 Sew to Blanket as shown in photo.

CHART I: INTARSIA

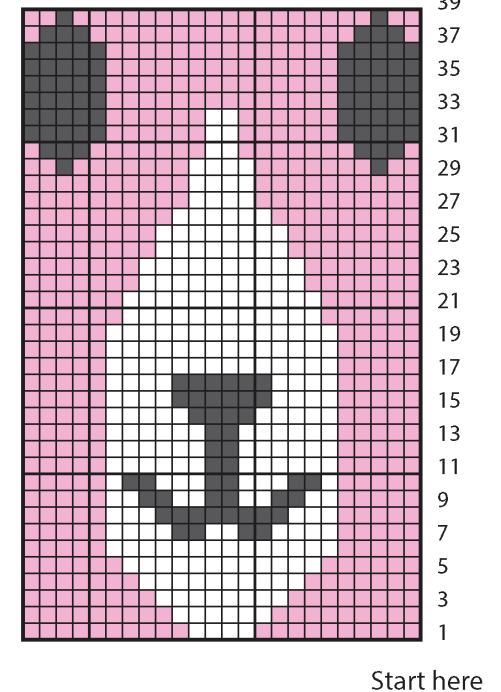


Key

■ = Contrast A

□ = Contrast B

CHART II: DUPLICATE STITCH



Key

■ = Contrast A

□ = Contrast B

■ = Duplicate st

DUPLICATE STITCH

