

Version 1



Version 2



CROCHET | SKILL LEVEL: INTERMEDIATE

**MEASUREMENT**

Approx 20" [51 cm] square.

**GAUGE**

6½ sc and 7 rows = 4" [10 cm].

**INSTRUCTIONS**

**Note:** When joining new color, work to last 2 loops on hook of last st. Draw new color through 2 loops, then proceed in new color. Carry color not in use across top of previous row and work sts around it to prevent stranding.

**FRONT AND BACK** (make alike).

With A, ch 34.

**1st row:** (RS). 1 sc in 2nd ch from hook. 1 sc in each ch to end of ch. Turn. 33 sc.

**2nd row:** Ch 1. 1 sc in each sc to end of row. Turn.

Rep last row twice more.

Beg working Chart, reading **RS** rows from **right to left** and **WS** rows from **left to right**.

Work 1st to 14th rows twice.

Break B.

**Next row:** With A, ch 1. 1 sc in each sc to end of row. Turn.

Rep last row 3 times more.

Fasten off.

**FINISHING**

With WS tog, join A with sl st to any corner. Ch 1. Working through both thicknesses, work sc evenly around 3 sides, having 3 sc in each corner. Insert pillow form. Cont working in rnd. Join with sl st to first sc. Fasten off.

**MATERIALS**

**Bernat® Blanket™** (10.5 oz/300 g; 220 yds/201 m)

**Version 1**

**Contrast A** Coal (10040) **2 balls or 270 yds/246 m**

**Contrast B** Vintage White (10006) **1 ball or 98 yds/89 m**

**Version 2**

**Contrast A** Red Rust (10963) **2 balls or 270 yds/246 m**

**Contrast B** Toasted Birch (10962) **1 ball or 98 yds/89 m**

Size U.S. M/13 (9 mm) crochet hook **or size needed to obtain gauge.** 20" [51 cm] square pillow form.

**ABBREVIATIONS**

**Approx**

= Approximate(ly)

**Beg** = Begin(ning)

**Ch** = Chain(s)

**Cont** = Continue

**Rep** = Repeat

**Rnd** = Round

**RS** = Right side

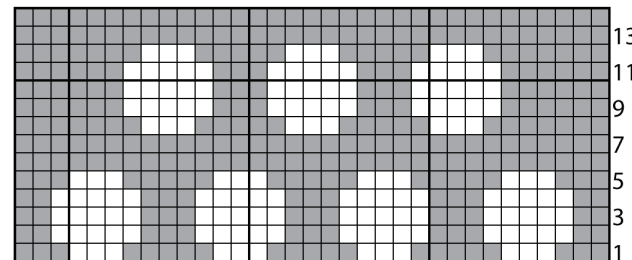
**Sc** = Single crochet

**Sl st** = Slip stitch

**St(s)** = Stitch(es)

**Tog** = Together

**WS** = Wrong side



**Key**  
 ■ = Contrast A  
 □ = Contrast B

Start Here