

BERNAT® COZY CROCHET TREE PILLOW *April Gopwani of Off the Hook Crochet Nook*



April Gopwani
from Off the Hook Crochet Nook



CROCHET | SKILL LEVEL: **EASY**

ABBREVIATIONS

Approx = Approximately

Beg = Beginning

Ch = Chain(s)

Dc = Double crochet

Dcbp = Yoh and draw up a loop around post of next stitch at back of work, inserting hook from right to left. (Yoh and draw through 2 loops on hook) twice.

Dcfp = Yoh and draw up a loop around post of next stitch at front of work, inserting hook from right to left. (Yoh and draw through 2 loops on hook) twice.

Rem = Remaining

Rep = Repeat

Rnd(s) = Round(s)

RS = Right side

Sc = Single crochet

Sl st = Slip stitch

St(s) = Stitch(es)

Tog = Together

WS = Wrong side

Yoh = Yarn over hook

MATERIALS

Bernat® Blanket™ (10.5 oz/300 g; 220 yds/201 m)

Contrast A Vintage White (10006) **2 balls**

Bernat® Blanket Stripes™ (10.5 oz/300 g; 220 yds/201 m)

Contrast B Meadowbrook (76003) **1 ball**

Size U.S. N/15 (10 mm) crochet hook **or size needed to obtain gauge.** 20" [51 cm] square pillow form.

MEASUREMENT

Approx 20" [51 cm] square.

GAUGE

5½ sc and 5½ rows = 4" [10 cm].

INSTRUCTIONS

Notes:

- Use separate balls of yarn for each area of color in the design. When joining colors, work to last 2 loops on hook of first color. Draw new color through last 2 loops and proceed.
- Ch 2 at beg of row **does not** count as st.

Front

Work Bottom Border as follows:

With A, ch 30.

1st row: (RS). 1 dc in 4th ch from hook (counts as 2 dc). 1 dc in each ch to end of chain. Turn. 28 dc.

2nd row: Ch 2. *1 dcbp around next st. 1 dcfp around next st. Rep from * to end of row. Turn.

3rd and 4th rows: Ch 1. 1 sc in each st to end of row. Turn.

Begin Tree Motif: (see chart shown right)

Tree Motif can be worked by following written instructions or by following chart, noting each square of chart represents 1 sc, and reading RS rows from right to left and WS rows from left to right.

1st row: (RS). With A, ch 1. 1 sc in each of next 11 sc. With B, 1 sc in each of next 6 sc. With A, 1 sc in each sc to end of row. Turn.

2nd to 3rd rows: As 1st row.

4th row: With A, ch 1. 1 sc in each of next 5 sc. With B, 1 sc in each of next 18 sc. With A, 1 sc in each sc to end of row. Turn.

5th row: With A, ch 1. 1 sc in each of next 6 sc. With B, 1 sc in each of next 16 sc. With A, 1 sc in each sc to end of row. Turn.

6th row: With A, ch 1. 1 sc in each of next 7 sc. With B, 1 sc in each of next 14 sc. With A, 1 sc in each sc to end of row. Turn.

7th row: With A, ch 1. 1 sc in each of next 8 sc. With B, 1 sc in each of next 12 sc. With A, 1 sc in each sc to end of row. Turn.

8th row: With A, ch 1. 1 sc in each of next 9 sc. With B, 1 sc in each of next 10 sc. With A, 1 sc in each sc to end of row. Turn.

9th row: With A, ch 1. 1 sc in each of next 10 sc. With B, 1 sc in each of next 8 sc. With A, 1 sc in each sc to end of row. Turn.

10th to 14th rows: As 4th to 8th rows.

15th row: With A, ch 1. 1 sc in each of next 11 sc. With B, 1 sc in each of

next 6 sc. With A, 1 sc in each sc to end of row. Turn.

16th row: With A, ch 1. 1 sc in each of next 12 sc. With B, 1 sc in each of next 4 sc. With A, 1 sc in each sc to end of row. Turn.

17th row: With A, ch 1. 1 sc in each of next 13 sc. With B, 1 sc in each of next 2 sc. With A, 1 sc in each sc to end of row. Turn.

18th row: With A, ch 1. 1 sc in each of next 14 sc. With B, 1 sc in next sc. With A, 1 sc in each sc to end of row. Turn.

Work Top Border as follows:

1st row: (RS). With A, ch 1. 1 sc in each sc to end of row. Turn.

2nd and 3rd rows: As 1st row.

4th row: Ch 2. 1 dc in each st to end of row. Turn.

5th row: Ch 2. *1 dcbp around next st. 1 dcfp around next st. Rep from * to end of row. Fasten off.

Back

Ch 29.

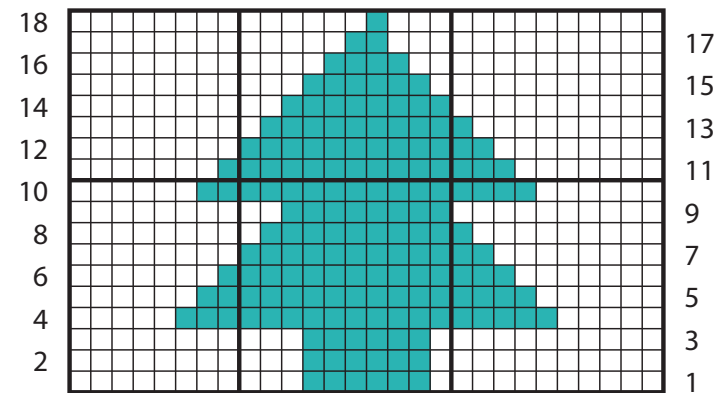
1st row: (RS) With A, 1 sc in 2nd ch from hook. 1 sc in each ch to end of chain. Turn. 28 sc.

2nd row: Ch 1. 1 sc in each st to end of row. Turn. Rep 2nd row until Back measures same length as Front. Fasten off.

FINISHING

Sew 3 sides of Pillow tog. Insert pillow form. Sew rem side closed.

Key
 □ = A
 ■ = B



Start here