

**BERNAT®** TWO TONE KNIT BLANKET | KNIT



KNIT | SKILL LEVEL: **INTERMEDIATE**

**ABBREVIATIONS**

**Approx** = Approximately

**Beg** = Beginning

**Cont** = Continue

**K** = Knit

**K2tog** = Knit next 2 stitches together

**Kfb** = Increase 1 stitch by knitting into front and back of next stitch

**P** = Purl

**Pat** = Pattern

**Rep** = Repeat

**RS** = Right side

**Sl1Pwyib** = Slip next stitch purlwise with yarn held in back

**Sl1Pwyif** = Slip next stitch purlwise with yarn held in front

**St(s)** = Stitch(es)

**WS** = Wrong side

**MEASUREMENTS**

Approx 50" x 58" [127 cm x 147.5 cm].

**GAUGES**

14 sts and 28 rows = 4" in garter st.

17 sts and 28 rows = 4" [10 cm] in pat.

**INSTRUCTIONS**

With A, cast on 162 sts. **Do not** join. Working back and forth across needle in rows, proceed as follows:

Knit 12 rows (garter st), noting 1st row is WS.

**Increase Row:** K2. Kfb. \*K4. Kfb. Rep from \* to last 4 sts. K4. 194 sts (multiple of 24 sts + 2).

Proceed in pat as follows (see chart on page 2):

**1st row:** (RS). With B, K1. \*Sl1Pwyib. K2. Rep from \* to last st. K1.

**2nd row:** With B, K1. \*P2. Sl1Pwyif. Rep from \* to last st. K1.

**3rd row:** With A, K1. \*K1. Sl1Pwyib. (K2. Sl1Pwyib) 3 times. K3. (Sl1Pwyib. K2) 3 times. Sl1Pwyib. Rep from \* to last st. K1.

**MATERIALS**

**Bernat® Crushed Velvet™** (10.5 oz/300 g; 315 yds/288 m)

**Contrast A** Cream (16002)

**3 balls**

**Contrast B** Deep Gray (16010)

**2 balls**

Size U.S. 8 (5 mm) circular knitting needle 36" [91.5 cm] long **or size needed to obtain gauge.**

## BERNAT® TWO TONE KNIT BLANKET | KNIT

**4th row:** With A, K1. \*S1Pwyif. (P2. S1Pwyif) 3 times. P3. (S1Pwyif. P2) 3 times. S1Pwyif. P1. Rep from \* to last st. K1.

**5th row:** With B, K1. \*K2. (S1Pwyib. K2) 3 times. S1Pwyib. K1. S1Pwyib. (K2. S1Pwyib) 3 times. K1. Rep from \* to last st. K1.

**6th row:** With B, K1. \*P1. (S1Pwyif. P2) 3 times. S1Pwyif. P1. S1Pwyif. (P2. S1Pwyif) 3 times. P2. Rep from \* to last st. K1.

**7th and 8th rows:** With A, rep 1st and 2nd rows.

**9th and 10th rows:** With B, rep 3rd and 4th rows.

**11th and 12th rows:** With A, rep 5th and 6th rows.  
These 12 rows form pat.

Cont in pat until work from beg measures approx 56" [142 cm], ending on 6th or 12th row of pat. Break B.

**Decrease Row:** With A, K2. K2tog. \*K4. K2tog. Rep from \* to last 4 sts. K5. 162 sts.

Knit 12 rows (garter st). Cast off knitwise.

### Side Borders

With A and RS facing, pick up and knit 190 sts evenly along side edge of Blanket. **Do not** join. Working back and forth across needle in rows, proceed as follows:

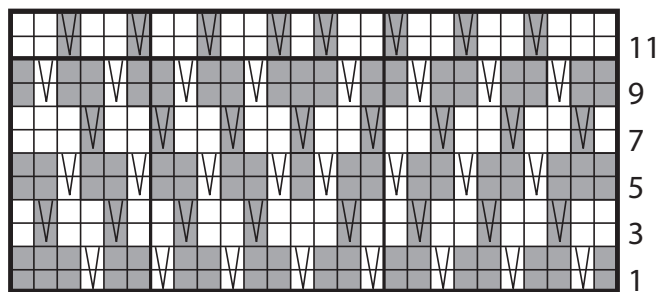
Knit 12 rows.

Cast off knitwise.

Rep for opposite side edge of Blanket.



Chart



24-st rep

Start Here

### Key

- = With A, knit on RS rows; purl on WS rows
- = With B, knit on RS rows; purl on WS rows
- ▽ = With A, S1Pwyib on RS rows; S1Pwyif on WS rows
- ▽ = With B, S1Pwyib on RS rows; S1Pwyif on WS rows