



KNIT | SKILL LEVEL: EASY

ABBREVIATIONS

Approx = Approximately

Beg = Begin(ning)

Dec = Decreasing

Inc = Increasing

K = Knit

K2togfb = Knit next 2 stitches

together but do not slip off

needle. Knit same 2 stitches

together again through back

loops. Slip off left-hand needle

P = Purl

Pat = Pattern

Rep = Repeat

RS = Right side

Sl1Pwyib = Slip next stitch
purlwise, with yarn in back of
work

Sl2Pwyif = Slip next 2 stitches
purlwise, with yarn in front of
work

St(s) = Stitch(es)

WS = Wrong side

MEASUREMENT

Approx 50 x 60" [127 x 152.5 cm]

GAUGE

12 sts and 17 rows = 4" [10 cm] in
stocking st.

INSTRUCTIONS

With B, cast on 145 sts. **Do not** join.
Working back and forth across
needle, proceed as follows:

1st row: (WS). Knit.

2nd and 3rd row: With C, knit.

4th and 5th rows: With B, knit.

Rep last 4 rows 3 times more, inc
5 sts evenly across last row. 150 sts.

Proceed in Tiny Dots Pat as follows:
(Pattern multiple of 4 sts + 22).
See chart on page 2.

1st row: (RS). With C, knit.

2nd row: K10. *P2. (P1, wrapping
yarn twice around needle) twice.
Rep from * to last 12 sts. P2. K10.

3rd row: With A, K10. *K2togfb.
Sl2Pwyib, slipping extra loops. Rep
from * to last 12 sts. K2togfb. K10.

4th row: With A, K10. *K2togfb.
Sl2Pwyif. Rep from * to last 12 sts.
K2togfb. K10.

5th row: With B, knit.

6th row: K10. Purl to last 10 sts.
K10.

MATERIALS

Bernat® Velvet™ (10.5 oz/300 g; 315 yds/288 m)

Contrast A Golden Moss (32039) **2 balls**

Contrast B Burgundy Plum (32004) **3 balls**

Contrast C Dark Chocolate (32078) **1 ball**

Size U.S. 10½ (6.5 mm) circular knitting needle 36" [91.5 cm] long **or**
size needed to obtain gauge. Yarn needle.

7th row: With C, knit.

8th row: K10. *(P1, wrapping yarn twice around needle) twice. P2. Rep from * to last 12 sts. (P1, wrapping yarn twice around needle) twice. K10.

9th row: With A, K10. *Sl2Pwyib, slipping extra loops. K2togfb. Rep from * to last 12 sts. Sl2Pwyib, slipping extra loops. K10.

10th row: With A, K10. *Sl2Pwyif. K2togfb. Rep from * to last 12 sts. Sl2Pwyif. K10.

11th and 12th rows: With B, as 5th and 6th rows.

Rep these 12 rows for Tiny Dots Pat until work from beg measures approx 56½ [143.5 cm], ending on 6th or 12th row of pat.

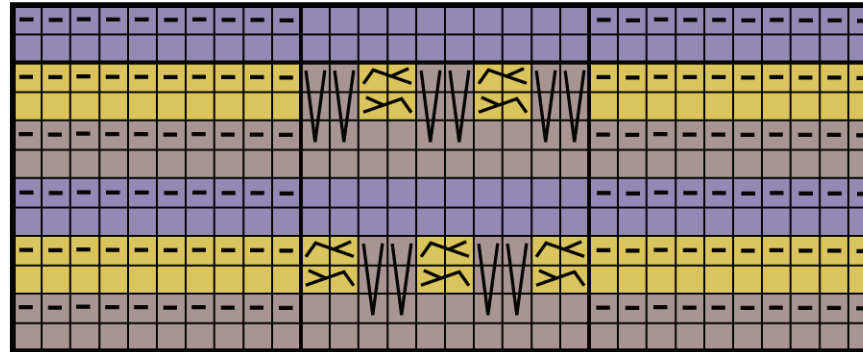
With C, knit 2 rows, dec 5 sts evenly across first row. 150 sts.

With B, knit 2 rows.

With C, knit 2 rows.

Rep last 4 rows 3 times more.

Cast off.



Key

- ■ ■ = With A, B or C - Knit on RS rows. Purl on WS rows.
- ■ ■ = With A, B or C - Purl on RS rows. Knit on WS rows.
- ⊠ = With A, K2togfb on RS rows
- ⊡ = With A, K2togfb on WS rows
- ⊞ = **WS row:** With C, P1, wrapping yarn twice around needle.
- Next RS row:** Sl2Pwyif, dropping extra loop.
- Next WS row:** Sl2Pwyib.