

## BERNAT® EZ INTARSIA HOME PILLOW



CRAFT I SKILL LEVEL: EASY

### ABBREVIATIONS

**Approx** = Approximately

### MEASUREMENTS

Approx 14" x 24" [35.5 x 61 cm]

### GAUGE

5 stitches = 4" [10 cm].

### INSTRUCTIONS

#### Notes

- Right side of project is facing at all times
- Pillow is worked in one piece side to side
- For Knit stitches 'Working yarn' is held behind stitches
- To change color when working from chart, cut last loop of working yarn to create a tail. Cut base of first loop of adjoining color to create a tail. Tie both ends together at wrong side of work, so first loop of contrast color will be next working loop.

### PILLOW

Beginning with Front of Pillow, following Chart on page 2, count 20 loops of MC for foundation row (noting yarn end is at far right and all loops are facing upwards).

**1st row:** With MC, working from left to right, pull the 21st loop (from 'working yarn') up through 20th loop (last loop of foundation row) from behind to create a knit stitch.\* Pull next loop from working yarn up through next loop of foundation row. Repeat from \* to end of row. **Do not** turn.

**2nd row:** Working from right to left, with working yarn at back, pull next loop from working yarn up from behind through last stitch worked on previous row to create a knit stitch. \*With working yarn at back, pull next loop from working yarn up from behind through next stitch to create next knit stitch. Repeat from \* to end of row. **Do not** turn.

### MATERIALS

**Bernat® Alize® Blanket-EZ™** (6.4 oz/180 g; 18 yds/16 m)

**Main Color (MC)** Slate Grays (37024)      **2 balls**

**Contrast A** Cream (37013)      **1 ball**

14" x 24" [35.5 x 61 cm] pillow form. 2 stitch markers. Small quantity of smooth worsted yarn in complimentary shade for seams.

## BERNAT® EZ INTARSIA HOME PILLOW

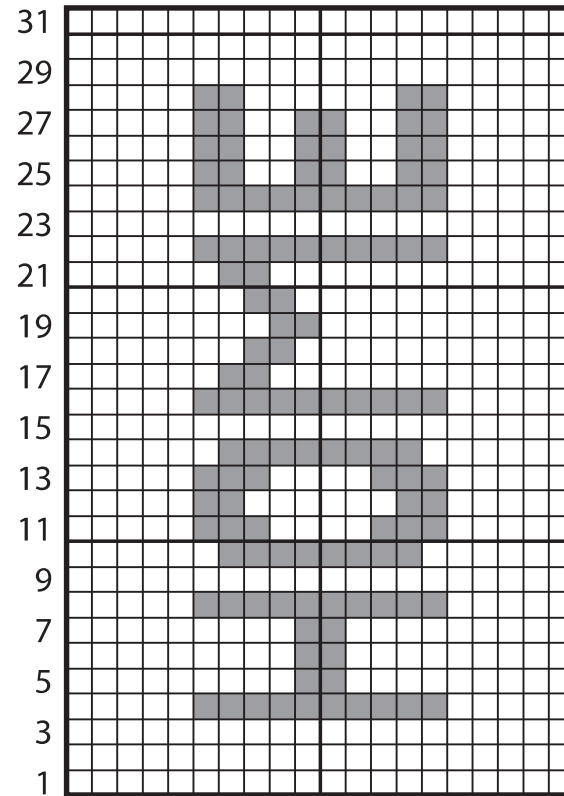
**3rd row:** Working from left to right, with working yarn at back, pull next loop from working yarn up from behind through last stitch worked on previous row to create a knit stitch. \*With working yarn at back, pull next loop from working yarn up from behind through next stitch to create next knit stitch. Repeat from \* to end of row. **Do not** turn. First 3 rows of Chart are complete.

Follow Chart for color changes, repeat 2nd and 3rd rows until 31 rows of Chart are complete. Place a marker at each side of last row.

For Back of Pillow, with MC only, repeat 2nd and 3rd rows for 31 more rows.

**Bind off row:** Working in same direction as last row, pull 2nd stitch through first stitch. Pull 3rd stitch through 2nd stitch. Pull 4th stitch through 3rd stitch. Continue in this manner to end of row. Cut last loop to create yarn tail. Pull yarn tail through last loop. Tie to secure and weave in ends.

Using smooth worsted weight yarn for seams, sew foundation row and bind off row together for side seam. Fold cover flat at marked rows. Sew bottom seam. Insert pillow form. Sew top seam.



Start Here

Key

- MC
- A