

## BERNAT® GEOMETRIC C2C CROCHET BLANKET



SUPER BULKY



CROCHET | SKILL LEVEL: **INTERMEDIATE**

### ABBREVIATIONS

**Approx** = Approximately

**Beg** = Beginning

**Ch** = Chain(s)

**Cont** = Continu(ity)(e)

**Dc** = Double crochet

**Dec** = Decrease

**Hdc** = Half double crochet

**Rem** = Remain(ing)

**Rep** = Repeat

**Rnd(s)** = Round(s)

**RS** = Right side

**Sl st** = Slip stitch

**Sp** = Space

**St(s)** = Stitch(es)

**Yoh** = Yarn over hook

### MEASUREMENT

Approx 41" [104 cm] square.

### GAUGE

7 dc and 4 rows = 4" [10 cm].

### INSTRUCTIONS

**Note:** Afghan is worked diagonally from corner to corner. When working from chart, wind small balls of the colors to be used, one for each separate area of color in the design. Start new colors at appropriate points. To change color, work to last 2 loops on hook, yoh with new color. Pull through 2 loops on hook to complete st and proceed in new color.

With MC, ch 6.

See Chart on page 2.

**1st row:** (RS). 1 dc in 4th ch from hook (counts as 2 dc). 1 dc in each of last 2 ch. Turn. 1 block made.

**2nd row:** *Ch 6. 1 dc in 4th ch from hook. 1 dc in each of next 2 ch - beg block made. (Sl st. Ch 3. 3 dc) in next ch-3 sp - block made.* Turn. 2 blocks.

**3rd row:** Beg block. \*Block in next ch-3 sp. Rep from \* to end of row. Turn. 3 blocks.

Keeping cont of color changes in Chart (each square on grid represents 1 block), rep last row until 29th row of chart is complete. 29 blocks.

### MATERIALS

**Bernat® Baby Blanket™** (10.5 oz/300 g; 220 yds/201 m)

**Main Color (MC)** White (04005)      **2 balls or 440 yds / 402 m**

**Contrast A** Seafoam (04736)      **1 ball or 220 yds / 201 m**

**Contrast B** Baby Lilac (04310)      **1 ball or 73 yds / 67 m**

Size U.S. L/11 (8 mm) crochet hook **or size needed to obtain gauge.**

## BERNAT® GEOMETRIC C2C CROCHET BLANKET

Keeping cont of Chart, proceed as follows to dec corner:

**30th row:** Sl st in each of first 3 dc. \*Block in next ch-3 sp. Rep from \* to last ch-3 sp. Sl st in last ch-3 sp. **(Do not** make a block.) Turn.

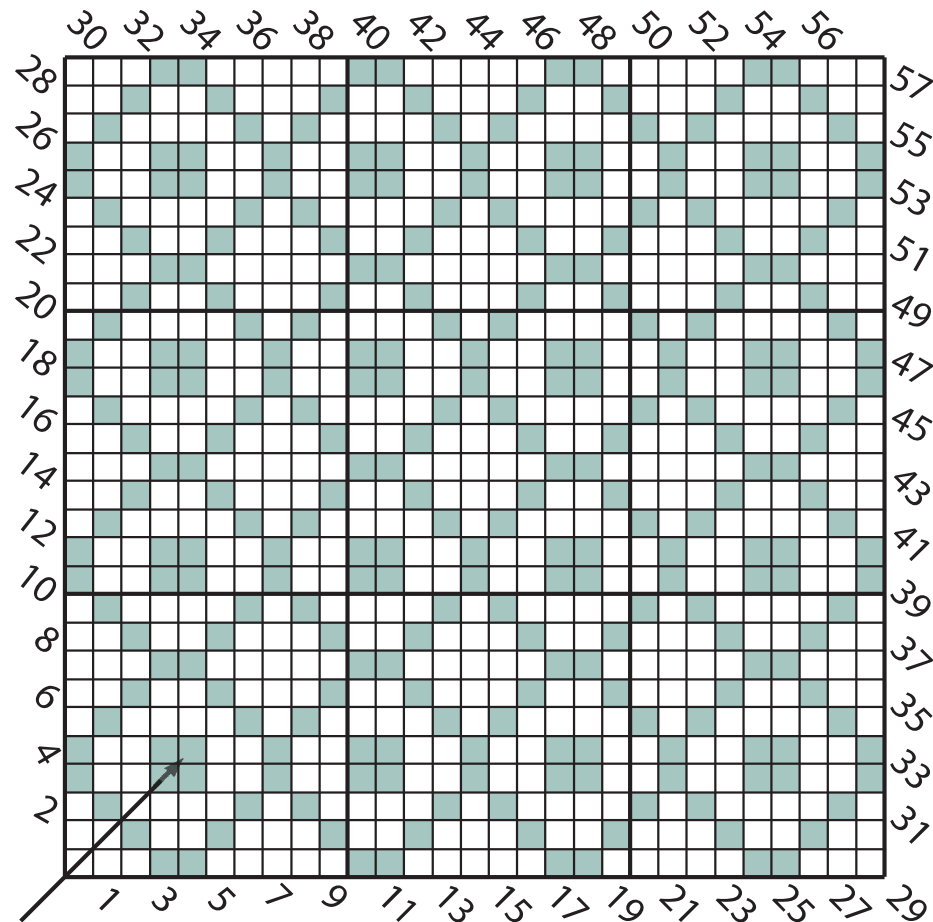
Keeping cont of Chart, rep last row until 1 block rem. Fasten off.

**Edging:** With RS facing, join B with sl st between any 2 blocks along edge.

**1st rnd:** Ch 3. \*Sl st between next 2 blocks. Ch 3. Rep from \* around, working (Sl st. Ch 3. Sl st) in each corner. Join with sl st in first sl st. Turn.

**2nd rnd:** Sl st in next ch-3 sp. Ch 2 (counts as hdc). 2 hdc in same sp as last sl st. \*3 hdc in next ch-3 sp. Rep from \* around, working (3 hdc. Ch 1. 3 hdc) in corner ch-3 sp. Join with sl st to top of ch-2. Fasten off.

Chart



### KEY

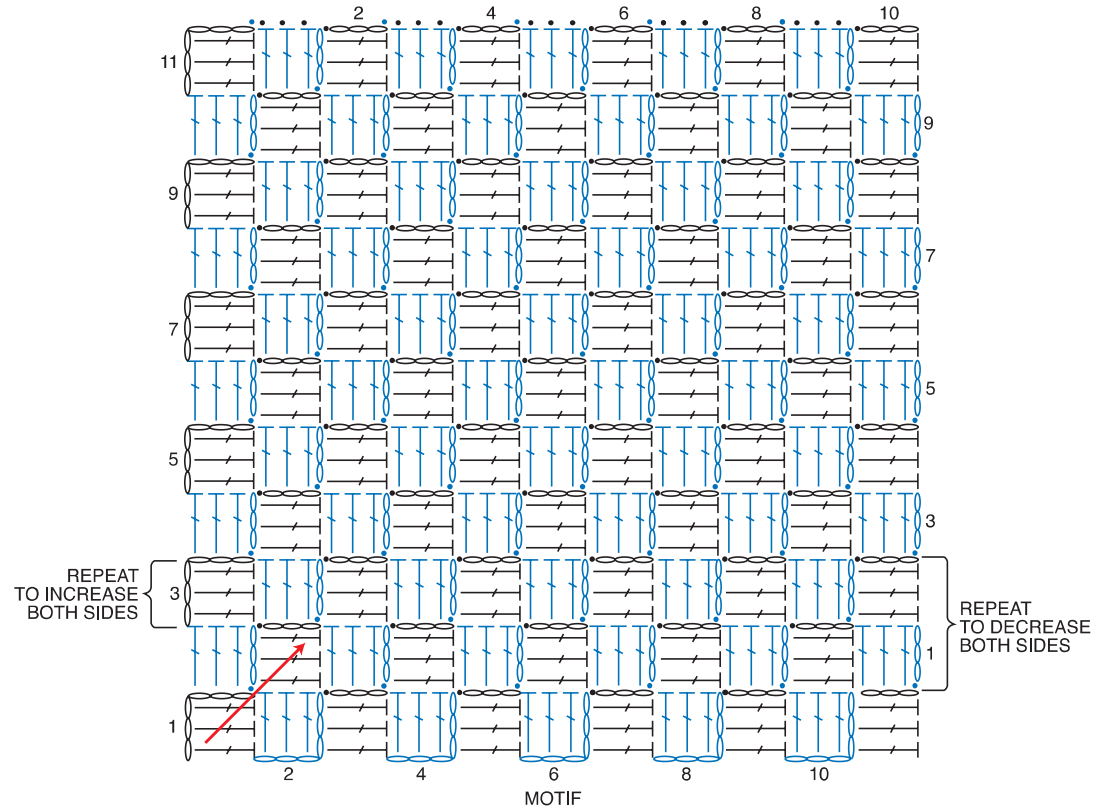
□ = Main Color (MC)

■ = Contrast A

Each square =  
Sl st in next ch-3 sp.  
Ch 3. 3 dc in same sp as sl st.

Blanket is worked diagonally - corner to corner

## Diagram



### STITCH KEY

○ = chain (ch)

● = slip stitch (sl st)

┆ = double crochet (dc)