



CROCHET | SKILL LEVEL: INTERMEDIATE

ABBREVIATIONS

Approx =

Approximately

Beg = Beginning

Ch = Chain(s)

Cont = Continue(ity)

Dc = Double crochet

Pat = Pattern

PM = Place marker

Rem = Remaining

Rep = Repeat

Rnd(s) = Round(s)

RS = Right side

Sc = Single crochet

Sc2tog = Draw up a loop in each of next 2 sc. Yoh and draw

through all 3 loops on hook

Sl st = Slip stitch

Sp(s) = Space(s)

St(s) = Stitch(es)

Yoh = Yarn over hook

SIZE

One size to fit Adult.

GAUGE

14 sc and 15 rows = 4" [10 cm].

INSTRUCTIONS

Note: Join all rnds with sl st to first sc.

Ribbing: Ch 8.

1st row: (RS). 1 sc in 2nd ch from hook and each ch to end of chain. Turn. 7 sc.

2nd row: Ch 1. *Working in back loops only*, 1 sc in each sc to end of row. Turn.

Rep last row until work, when slightly stretched, from beg measures 19½" [49.5 cm].** **Do not** fasten off.

Set-up rnd: Ch 1. (1 sc. Ch 1) 36 times across longer side of ribbing. Join. PM for beg of rnd.

Proceed in pat as follows:
See diagram on page 2.

1st rnd: Ch 1. 1 sc in same sp as sl st. *(Ch 1. Skip next ch-1 sp. 1 dc in next sc) 4 times. (Ch 1. Skip next ch-1 sp. 1 sc in next sc) twice. Rep from *, ending last rep with: (Ch 1. Skip next ch-1 sp. 1 sc in next sc. Ch 1. Skip last ch-1 sp). Join.

MATERIALS

Caron® Simply Soft® (6 oz/170 g; 315 yds/288 m)

Off White (9702)

1 ball

Size U.S. G/6 (4 mm) crochet hook **or size needed to obtain gauge.**
Stitch marker.

2nd rnd: Ch 1. 1 sc in same sp as sl st. *Ch 5. Skip next (ch-1 sp, 1 dc) twice. From front, sl st in next ch-1 sp 2 rows below. Ch 5. Skip next (1 dc, ch-1 sp) twice. 1 sc in next sc. Ch 1. Skip next ch-1 sp. 1 sc in next sc. Rep from * ending last rep with: 1 sc in next sc. Ch 1. Skip last ch-1 sp. Join.

3rd rnd: Ch 1. 1 sc in same sp as sl st. *(Working behind ch-5 sp, ch 1. Skip next ch-1 sp. 1 dc in next dc 2 rows below) 4 times. (Ch 1. Skip next ch-1 sp. 1 sc in next sc) twice. Rep from * ending last rep with: (Ch 1. Skip next ch-1 sp. 1 sc in next sc. Ch 1. Skip last ch-1 sp). Join. Rep last 2 rnds until work from beg measures 8½" [21.5 cm], ending on a 3rd rnd.

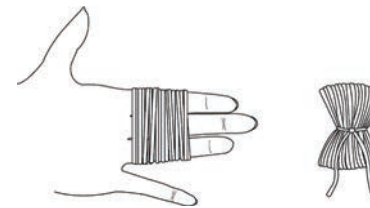
Shape crown: 1st rnd: Ch 1. 1 sc in same sp as sl st. *(Ch 1. Skip next ch-1 sp. 1 sc in next dc) 4 times. Ch 1. Skip next (ch-1 sp, sc, ch-1 sp). 1 sc in next sc. Rep from * around, ending last rep with: Ch 1. Skip next (ch-1 sp, sc, ch-1 sp). Join.

2nd rnd: Ch 1. 1 sc in same sp as sl st. *(Ch 1. Skip next ch-1 sp. 1 sc in next sc) 3 times. Ch 1. Skip next (ch-1 sp, sc, ch-1 sp). 1 sc in next sc. Rep from * around, ending last rep with: Ch 1. Skip next (ch-1 sp, sc, ch-1 sp). Join.

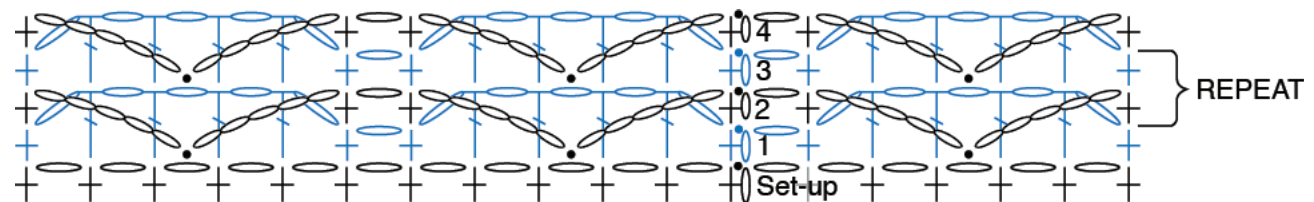
3rd rnd: Ch 1. 1 sc in same sp as sl st. *(Ch 1. Skip next ch-1 sp. 1 sc in next sc) twice. Ch 1. Skip next (ch-1 sp, sc, ch-1 sp). 1 sc in next sc. Rep from * around ending last rep with: Ch 1. Skip next (ch-1 sp, sc, ch-1 sp). Join.

4th rnd: Ch 1. 1 sc in same sp as sl st. *Ch 1. Skip next ch-1 sp. 1 sc in next sc. Ch 1. Skip next (ch-1 sp, sc, ch-1 sp). 1 sc in next sc. Rep from * around, ending last rep with: Ch 1. Skip next (ch-1 sp, sc, ch-1 sp). Join. Fasten off leaving a long end. Thread end through rem sts. Pull tightly. Fasten securely.

Pompom: Wind yarn around 3 fingers 100 times. Tie tightly in the middle and leave a long end for attaching to Hat. Cut loops at both ends and trim to smooth round shape. Sew securely to top of Hat. Sew short ends of ribbing tog.



- STITCH KEY
- = chain (ch)
 - = slip stitch (sl st)
 - + = single crochet (sc)
 - ⌋ = double crochet (dc)



REDUCED SAMPLE OF HAT PATTERN