



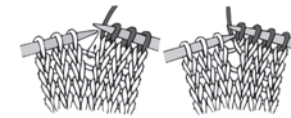
KNIT | SKILL LEVEL: INTERMEDIATE

## ABBREVIATIONS

**Approx** = Approximately  
**Beg** = Beginning  
**Cont** = Continue(ity)  
**Dec(s)** = Decrease(s) (ing)  
**Inc** = Increasing  
**K** = Knit  
**K2tog** = Knit next 2 stitches together

**M1** = Make 1 stitch by picking up horizontal loop lying before next stitch and knitting into back of loop

**P** = Purl  
**Pat** = Pattern  
**PM** = Place marker  
**Rem** = Remaining  
**Rep** = Repeat  
**Rnd(s)** = Round(s)  
**RS** = Right side  
**St(s)** = Stitch(es)  
**Tog** = Together  
**WS** = Wrong side



## MEASUREMENTS

Approx 8 x 60" [20.5 x 152.5 cm].

## GAUGE

17 sts and 24 rows = 4" [10 cm] in Moss St Pat.

## INSTRUCTIONS

**Note:** When working from chart, carry yarn not in use loosely across WS of work but never over more than 5 sts. When it must pass over more than 5 sts, weave it over and under color in use. The colors are never twisted around one another.

## SCARF

With F, cast on 39 sts.

**1st and 4th rows:** K1. \*P1. K1. Rep from \* to end of row.

**2nd and 3rd rows:** P1. \*K1. P1. Rep from \* to end of row.

Rep these 1st to 4th rows of Moss St Pat once more.

Proceed as follows:

**\*\*1st row:** (RS). K1. P1. Knit to last 2 sts. P1. K1.

**2nd row:** P1. K1. Purl to last 2 sts. K1. P1.

**3rd row:** P1. K1. P1. Knit to last 3 sts. P1. K1. P1.

## MATERIALS

**Caron® Simply Soft®** (6 oz/170 g; 315 yds/288 m)

**Contrast A** Dark Country Blue (9711) **1 ball**

**Contrast B** Country Blue (9710) **1 ball**

**Contrast C** Light Country Blue (9709) **1 ball**

**Contrast D** Light Country Peach (9737) **1 ball**

**Contrast E** Off White (9702) **1 ball**

**Caron® Simply Soft® Heathers™** (5 oz/141.7 g; 250 yds/228 m)

**Contrast F** Gray Heather (9509) **1 ball**

**Contrast G** Woodland Heather (9503) **1 ball**

Size U.S. 8 (5 mm) knitting needles **or size needed to obtain gauge.**  
 Stitch marker. Tapestry needle.

**4th row:** K1. P1. K1. Purl to last 3 sts. K1. P1. K1.\*\*

Rep last 4 rows until work from beg measures approx 7" [18 cm], ending on a 3rd row.

**Next row:** (WS). K1. P1. K1. Purl to last 3 sts, dec 2 sts evenly across. K1. P1. K1. 37 sts.

Proceed in Moss St Pat as given above until work from beg measures approx 51" [129.5 cm], ending on a 3rd row of pat.

Proceed as follows:

**1st row:** (WS). K1. P1. K1. Purl to last 3 sts, inc 2 sts evenly across. K1. P1. K1. 39 sts.

Work from \*\* to \*\* as given above for approx 7" [18 cm], ending on a 4th row.

Proceed in Moss St Pat as given above for 8 rows.

Cast off in pat.

## Fair Isle Pocket (make 2)

With A, cast on 36 sts.

Work in Chart, *reading knit rows from right to left and purl rows from left to right*, noting 8-st rep will be worked 4 times as follows:

**1st row:** (RS). With appropriate color, K2. Knit 1st row of Chart to last 2 sts. With appropriate color, K2.

**2nd row:** With appropriate color, K2. Purl 2nd row of Chart to last 2 sts. With appropriate color, K2.

Chart is now in position.

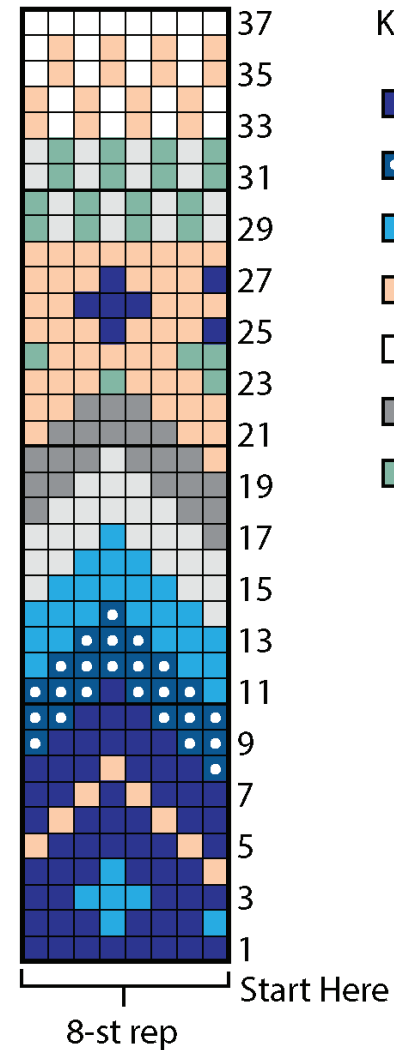
Work in Chart until 37 rows of chart are complete.

**Next row:** (WS). Purl, dec 3 sts evenly across. 33 sts.

Work 4 rows in Moss St Pat.

Cast off in pat.

Sew Pockets at both ends of Scarf between Moss St Pat over stocking st sections.



## Key

- = With A, 1 sc
- = With B, 1 sc
- = With C, 1 sc
- = With D, 1 sc
- = With E, 1 sc
- = With F, 1 sc
- = With G, 1 sc