



KNIT | SKILL LEVEL: INTERMEDIATE

ABBREVIATIONS

Approx =
Approximately
Cont = Continue
K = Knit
K2tog = Knit next
2 stitches together

Pat = Pattern
Rep = Repeat
RS = Right side
Sl1Pwyib = Slip next
stitch purlwise with
yarn in back of work

Sl1Pwyif = Slip next
stitch purlwise with
yarn in front of work
St(s) = Stitch(es)
WS = Wrong side

MEASUREMENTS

Approx 63" [160 cm] wide x 13"
[33 cm] deep.

GAUGE

17 sts and 32 rows = 4" [10 cm] in
garter st.

INSTRUCTIONS

Mosaic Border Pat

Note: See chart on page 2.

1st row: (RS). With Color 1, K1.
*Sl1Pwyib. K2. (Sl1Pwyib) twice. K3.
(Sl1Pwyib) twice. K2. Rep from * to
last 2 sts. Sl1Pwyib. K1.

2nd row: With Color 1, K1.
*Sl1Pwyif. K2. (Sl1Pwyif) twice. K3.
(Sl1Pwyif) twice. K2. Rep from * to
last 2 sts. Sl1Pwyif. K1.

3rd row: With Color 2, K6.
*(Sl1Pwyib) 3 times. K9. Rep from *
to last 9 sts. (Sl1Pwyib) 3 times. K6.

4th row: With Color 2, K6.
*(Sl1Pwyif) 3 times. K9. Rep from *
to last 9 sts. (Sl1Pwyif) 3 times. K6.

5th row: With Color 1, K2.
*(Sl1Pwyib) twice. K7. (Sl1Pwyib)
twice. K1. Rep from * to last st. K1.

6th row: With Color 1, K2.
*(Sl1Pwyif) twice. K7. (Sl1Pwyif)
twice. K1. Rep from * to last st. K1.

7th row: With Color 2, K4.
*(Sl1Pwyib) twice. K3. (Sl1Pwyib)
twice. K5. Rep from * to end of row,
ending final rep with K4.

8th row: With Color 2, K4.
*(Sl1Pwyif) twice. K3. (Sl1Pwyif)
twice. K5. Rep from * to end of row,
ending final rep with K4.

9th row: With Color 1, K1.
(Sl1Pwyib) twice. *K9. (Sl1Pwyib)
3 times. Rep from * to last 12 sts.
K9. (Sl1Pwyif) twice. K1.

MATERIALS

Caron® Simply Soft® (6 oz/170.1 g; 315 yds/288 m)

Contrast A Soft Pink (9719) **2 balls**

Contrast B Black (9727) **2 balls**

Contrast C Off White (9702) **2 balls**

Size U.S. 8 (5 mm) circular knitting needle 36" [91.5 cm] long **or size
needed to obtain gauge.**

10th row: With Color 1, K1. (Sl1Pwyif) twice. *K9. (Sl1Pwyif) 3 times. Rep from * to last 12 sts. K9. (Sl1Pwyif) twice. K1.

11th row: With Color 2, K3. *(Sl1Pwyib) twice. K2. Sl1Pwyib. K2. (Sl1pwyib) twice. K3. Rep from * to end of row.

12th row: With Color 2, K3. *(Sl1Pwyif) twice. K2. Sl1Pwyif. K2. (Sl1pwyif) twice. K3. Rep from * to end of row.

13th and 14th rows: With Color 1, knit.

These 14 rows form Mosaic Border Pat.

SHAWL

With A, cast on 267 sts.

Knit 2 rows.

Using B as Color 1 and A as Color 2, work Mosaic Border Pat once. Break A.

Using C as Color 1 and B as Color 2, work Mosaic Border Pat once. Break B.

Using A as Color 1 and C as Color 2, work Mosaic Border Pat once. Break C.

Using B as Color 1 and A as Color 2, work Mosaic Border Pat once. Break B.

With A, knit 2 rows.

Work short row shaping as follows:

1st row: K137. Turn.

2nd row: K7. K2tog. K3. Turn.

3rd row: K10. K2tog. K3. Turn.

4th row: K13. K2tog. K3. Turn.

5th row: K16. K2tog. K3. Turn.

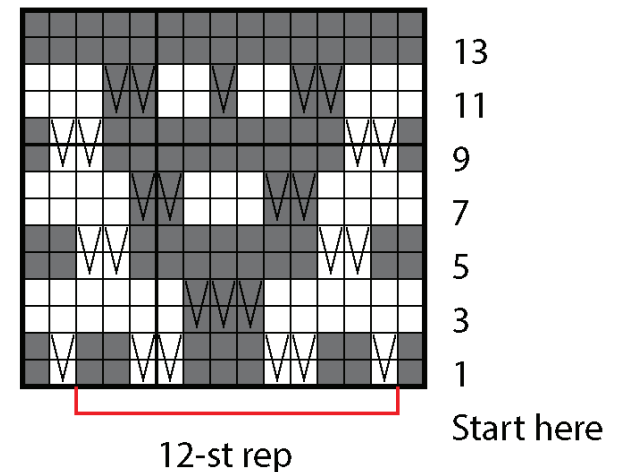
Cont as established, knitting to 1 st before turn from previous row, followed by (K2tog. K3) until all sts have been worked.

Knit 2 rows (garter st).

Cast off knitwise.



Mosaic Border Pat



Key

■ = Color 1

□ = Color 2

▣ = With Color 1, Sl1Pwyib on RS. Sl1Pwyif on WS

▤ = With Color 2, Sl1Pwyib on RS. Sl1Pwyif on WS