

Strawberry



Watermelon



Lipstick



KNIT | SKILL LEVEL: EASY

ABBREVIATIONS

Alt = Alternate
Beg = Begin(ing)
Cont = Continue(ing)
Dec = Decrease(ing)
Inc = Increase(ing)
K = Knit
K1tbl = Knit into next stitch through back loop
K2tog = Knit next 2 stitches together
P = Purl
P1tbl = Purl into next stitch through back loop
P2tog = Purl next 2 stitches together

P2togtbl = Purl next 2 stitches together through back loops
Pat = Pattern
Rem = Remain(ing)(s)
Rep = Repeat
RS = Right side
SI1Pwyib = Slip next stitch purlwise with yarn in back
Ssk = Slip next 2 stitches knitwise one at a time. Pass them back onto left-hand needle, then knit through back loops together
St(s) = Stitch(es)
WS = Wrong side

MATERIALS

Sizes	XS/S	M	L	XL	2/3XL	4/5XL	
Caron® Simply Soft® (6 oz/170 g; 315 yds/288 m)							
Strawberry (0015)	3	3	4	4	5	6	balls
OR							
Caron® Simply Soft® Brites™ (6 oz/170 g; 315 yds/288 m)							
Watermelon (B9604)	3	3	4	4	5	6	balls
OR							
Caron® Simply Soft® Speckle™ (5 oz/141 g; 235 yds/215 m)							
Lipstick (61016)	4	4	5	5	6	7	balls

Sizes U.S. 7 (4.5 mm) and U.S. 8 (5 mm) knitting needles **or size needed to obtain gauge**. 4 st holders. 6 buttons.

SIZES

To fit bust measurement

XS/S	28-34" [71-86.5 cm]
M	36-38" [91.5-96.5 cm]
L	40-42" [101.5-106.5 cm]
XL	44-46" [112-117 cm]
2/3XL	48-54" [122-137 cm]
4/5XL	56-62" [142-157.5 cm]

Finished bust

XS/S	37" [94 cm]
M	40" [101.5 cm]
L	44½" [113 cm]
XL	49" [124.5 cm]
2/3XL	55" [139.5 cm]
4/5XL	63" [160 cm]

GAUGE

18 sts and 24 rows = 4" [10 cm] in stocking st with larger needles.

INSTRUCTIONS

The instructions are written for smallest size. If changes are necessary for larger size(s) the instructions will be written thus (). Numbers for each size are shown in the same color throughout the pattern. When only one number is given in black, it applies to all sizes.

BACK

With smaller needles cast on **85** (93-101-111-125-143) sts.

1st row: (RS). *K1tbl. P1. Rep from * to last st. K1tbl.

2nd row: *P1tbl. K1. Rep from * to last st. P1tbl.

Rep last 2 rows of (K1tbl. P1) ribbing until work from beg measures 3" [7.5 cm], ending on a WS row.

Change to larger needles and proceed in pat as follows:

1st row: (RS). Knit.

2nd row: K2. *K1. Sl1Pwyib. Rep from * to last 2 sts. K2.

3rd row: As 1st row.

4th row: K3. *K1. Sl1Pwyib. Rep from * to last 4 sts. K4.

These 4 rows form Slip St pat.

Cont in pat until work from beg measures **12** (12-12-13-13-13)" [**30.5** (30.5-30.5-33-33-33) cm], ending on a WS row.

Shape raglans: Keeping cont of pat, cast off **2** (2-3-3-4-4) sts beg next 2 rows. **81** (89-95-105-117-135) sts.

Sizes 2/3XL and 4/5XL only:

1st row: (RS). K2. ssk. Knit to last 4 sts. K2tog. K2.

2nd row: P2. P2tog. Pat to last 4 sts. P2togtbl. P2.

Rep last 2 rows (4-14) times more, then 1st row once. (95-73) sts.

Work 1 row even in pat.

Sizes M, L, XL, 2/3XL and 4/5XL only:

1st row: (RS). K2. ssk. Knit to last 4 sts. K2tog. K2.

2nd row: P2. P2tog. Pat to last 4 sts. P2togtbl. P2.

3rd row: As 1st row.

4th row: P4. Pat to last 4 sts. P4.

Rep last 4 rows (1-1-5-3-2) time(s) more (77-83-69-71-55) sts.

All sizes: 1st row: (RS). K2. ssk. Knit to last 4 sts. K2tog. K2.

2nd row: P4. Pat to last 4 sts. P4. Rep last 2 rows **23** (21-23-16-16-8) times more. **33** (33-35-35-37-37) sts.

Leave rem sts on a st holder.

LEFT FRONT

With smaller needles, cast on **43 (47-51-57-63-73) sts.

Work 3" [7.5 cm] in (K1tbl. P1) ribbing as given for Back, ending on a WS row.

Change to larger needles and proceed in pat as follows:

1st row: (RS). Knit.

2nd row: K2. *K1. Sl1Pwyib. Rep from * to last 2 sts. K2.

3rd row: As 1st row.

4th row: K3. *K1. Sl1Pwyib. Rep from * to last 4 sts. K4.

These 4 rows form Slip St pat. **

Cont in pat until work from beg measures **12** (12-12-13-13-13)" [**30.5** (30.5-30.5-33-33-33) cm], ending on a WS row.

Shape raglan: (RS). Cast off **2** (2-3-3-4-4) sts at beg of next row. **41** (45-48-53-59-68) sts. Work 1 row even in pat.

Sizes 2/3XL and 4/5XL only:

1st row: (RS). K2. ssk. Knit to end of row.

2nd row: Pat to last 4 sts. P2togtbl. P2.

Rep last 2 rows (4-14) times more, then 1st row once. (48-37) sts.

Work 1 row even in pat.

Sizes M, L, XL, 2/3XL and 4/5XL only:

1st row: (RS). K2. ssk. Knit to end of row.

2nd row: Pat to last 4 sts. P2togtbl. P2.

3rd row: As 1st row.

4th row: Pat to last 4 sts. P4.

Rep last 4 rows (1-1-5-3-2) time(s) more. (39-42-35-36-28) sts.

Sizes XS/S, M, L, XL and 2/3XL only:

1st row: (RS). K2. ssk. Knit to end of row.

2nd row: Pat to last 4 sts. P4.

Rep last 2 rows **14** (12-14-7-7) times more. **26** (26-27-27-28) sts.

All sizes: Shape neck: 1st row: (RS). K2. ssk. K10. K2tog (neck edge).
Turn. Leave rem **10 (10-11-11-12-12)** sts on a st holder.
2nd row: Pat to last 4 sts. P4.

Keeping cont of pat, dec 1 st at neck edge on next and alt rows, AT SAME TIME, dec 1 st at raglan edge (as before) on next and alt rows until there are 4 sts.

Next row: (WS). Purl.
Next row: ssk. K2tog. 2 sts.
Next row: P2.
Next row: K2tog. Fasten off.

RIGHT FRONT

Work from ** to ** as given for Left Front.

Cont in pat until work from beg measures **12 (12-12-13-13-13)**" [**30.5 (30.5-30.5-33-33-33)** cm], ending on a RS row.

Shape raglan: Next row: (WS). Cast off **2 (2-3-3-4-4)** sts. Pat to end of row. **41 (45-48-53-59-68)** sts.

Sizes 2/3XL and 4/5XL only:
1st row: (RS). Knit to last 4 sts. K2tog. K2.

2nd row: P2. P2tog. Pat to end of row.
 Rep last 2 rows (**4-14**) times more, then 1st row once. (**48-37**) sts.
 Work 1 row even in pat.

Sizes M, L, XL, 2/3XL and 4/5XL only: 1st row: (RS). Knit to last 4 sts. K2tog. K2.
2nd row: P2. P2tog. Pat to end of row.
3rd row: As 1st row.
4th row: P4. Pat to end of row.
 Rep last 4 rows (**1-1-5-3-2**) time(s) more. (**39-42-35-36-28**) sts.

Sizes XS/S, M, L, XL and 2/3XL only: 1st row: (RS). Knit to last 4 sts. K2tog. K2.
2nd row: P4. Pat to end of row.
 Rep last 2 rows **14 (12-14-7-7)** times more. **26 (26-27-27-28)** sts.

All sizes: Shape neck: 1st row: (RS). Break yarn and slip first **10 (10-11-11-12-12)** sts onto a st holder. Rejoin yarn to rem sts. ssk. Knit to last 4 sts. K2tog. K2.
2nd row: P4. Pat to end of row.
 Dec 1 st at neck edge on next and alt rows, AT SAME TIME, dec 1 st at raglan edge (as before) on next and alt rows until there are 4 sts.

Next row: (WS). Purl.
Next row: ssk. K2tog. 2 sts.
Next row: P2.
Next row: K2tog. Fasten off.

SLEEVES

With smaller needles, cast on **41 (41-45-45-49-49)** sts.
 Work 3" [7.5 cm] in (K1tbl. P1) ribbing as given for Back, ending on a WS row.

Change to larger needles and work 6 rows in Slip St pat as given for Back.

Keeping cont of pat, inc 1 st each end of next row and following **6th (4th-4th-4th-4th-4th)** rows until there are **67 (59-63-81-83-85)** sts, taking inc sts into pat.

Sizes M and L only: Inc 1 st each end of following 6th rows until there are (**73-77**) sts.

All sizes: Cont even in pat until work from beg measures **17 (17½-17½-16½-16-16)**" [**43 (44.5-44.5-42-40.5-40.5)** cm], ending on a WS row.

Shape raglans: Keeping cont of pat, cast off **2 (2-3-3-4-4)** sts at beg of next 2 rows. **63 (69-71-75-75-77)** sts.

1st row: (RS). K2. ssk. Knit to last 4 sts. K2tog. K2.
2nd row: P2. P2tog. Pat to last 4 sts. P2togtbl. P2.
3rd row: As 1st row.
4th row: P4. Pat to last 4 sts. P4.
 Rep last 4 rows **2 (3-2-2-0-1)** time(s) more. **45 (45-53-57-69-65)** sts.

1st row: (RS). K2. ssk. Knit to last 4 sts. K2tog. K2.
2nd row: P4. Pat to last 4 sts. P4.
 Rep last 2 rows **17 (17-21-22-28-26)** times more.
 Leave rem **9 (9-9-11-11-11)** sts on a st holder.

FINISHING

Sew raglan seams. Sew side and sleeve seams.

Neckband: With RS facing and smaller needles, K10 (10-11-11-12-12) from Right Front st holder. Pick up and knit 15 sts up Right Front neck edge. K9 (9-9-11-11-11) from Right Sleeve st holder, dec 2 sts evenly across. K33 (33-35-35-37-37) sts from Back st holder, dec 3 sts evenly across. K9 (9-9-11-11-11) from Left Sleeve st holder, dec 2 sts evenly across. Pick up and knit 15 sts down Left Front neck edge. K10 (10-11-11-12-12) from Left Front st holder. 94 (94-98-102-106-106) sts.

Beg on a 2nd row, work 9 rows in (K1tbl. P1) ribbing as given for Back. Cast off in ribbing.

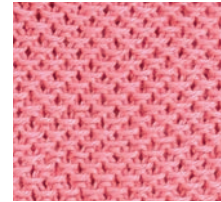
Buttonhole Band: With RS facing and smaller needles, pick up and knit 75 (75-75-79-79-79) sts evenly along Right Front edge to cast off edge of neckband.

Beg on a 2nd row, work 3 rows in (K1tbl. P1) ribbing as given for Back.

4th row: (RS). Rib across 4 sts. *Cast off 2 sts. Rib across 11 (11-11-12-12-12) sts (including st on needle after cast off). Rep from * 4 times more. Cast off 2 sts. Rib to end of row.

5th row: Rib, casting on 2 sts over cast off sts. Work a further 4 rows in ribbing. Cast off in ribbing.

Button Band: Work as for Buttonhole band, picking up sts along opposite side edge and omitting all references to buttonholes. Sew on buttons to correspond to buttonholes.



BACK

