



KNIT | SKILL LEVEL: EASY

## ABBREVIATIONS

**Alt** = Alternate(ing)  
**Approx** = Approximately  
**Beg** = Beginning  
**Cont** = Continue(ity)  
**K** = Knit  
**K2tog** = Knit next 2 stitches together  
**P** = Purl

**Pat** = Pattern  
**PM** = Place marker  
**Rep** = Repeat  
**Rnd(s)** = Round(s)  
**RS** = Right side  
**St(s)** = Stitch(es)  
**WS** = Wrong side

## MEASUREMENTS

Approx 48 x 60" [122 x 152.5 cm]

## GAUGE

5 sts and 7 rows = 4" [10 cm] in stocking st.

## INSTRUCTIONS

Cast on 71 sts. **Do not** join in rnd. Working back and forth across needle in rows, proceed as follows: See chart on page 2.

**1st row:** (RS). Knit.

**2nd and alt rows:** K3. Purl to last 3 sts. K3.

**3rd row:** K3. \*P1. PM on last st. K9. Rep from \* to last 8 sts. P1. PM on last st. K7.

**5th row:** Knit.

**\*\*7th row:** (RS – tuck row). \*K7. \*Insert left-hand needle from WS through 2 vertical bars of first marked st 4 rows below.



*K2tog (picked up 2 bars and next st) – tuck st left made. Remove marker. K9. Rep from \* to last 4 sts. Tuck st left. Remove marker. K3.*

**9th row:** Knit.

## MATERIALS

**Bernat® Blanket Extra™** (300 g/10.5 oz, 97 yds/87 m)

Light Teal (27037)

**6 balls**

Size U.S. 17 (12.75 mm) circular knitting needle 36" [91.5 cm] long **or size needed to obtain gauge.** Stitch markers.

**11th row:** K3. \*K9. P1. PM on last st.  
Rep from \* to last 8 sts. K8.

**13th row:** Knit.

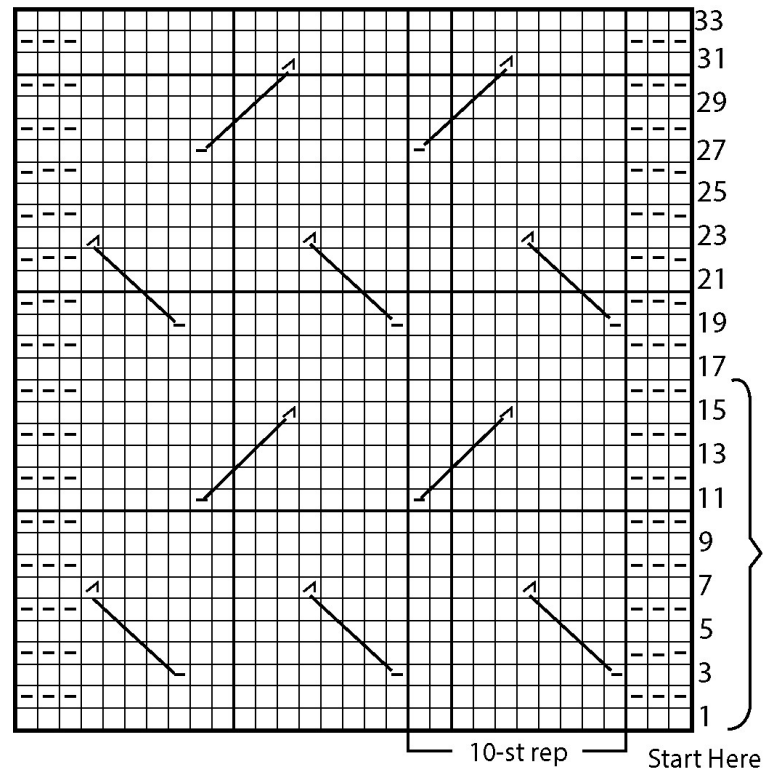
**15th row:** (RS – tuck row). K8.  
*\*Insert right-hand needle from WS through 2 vertical bars of marked st 4 rows below. Slip these 2 bars onto left-hand needle. K2tog (picked up 2 bars and next st) - tuck st right made. Remove marker. K9. Rep from \* to last 3 sts. K3.*

**16th row:** As 2nd row.

Rep 1st to 16th rows for pat until work from beg measures approx 58" [147.5 cm], ending on 8th or 16th row of pat.

**Next row:** (RS). Knit.

**Next row:** K3. Purl to last 3 sts. K3.  
Cast off knitwise.



**Key**

- = Knit on RS rows. Purl on WS rows
- ◻ = Knit on WS rows. Purl on RS rows
- ▣ = K2tog

Rep 1st to 16th rows for Pat