



# Timeless Tunisian Blanket

**Finished Measurements:** Approx 54"/137.16cm x 75"/190.5cm

**RED HEART® "Super Saver®":** 5 skeins 633 Dark Sage **A**, 4 skeins each of 382 Country Blue **B**, 631 Light Sage **C** and 380 Windsor Blue **D**

**Crochet Hook:** G-6 (4.5mm) Tunisian/Afghan hook or any size to obtain correct gauge and G-6 (4.5mm) crochet hook  
Yarn needle

**GAUGE:** 17 Tss + 14 rows = 2"/5cm using size G-6 (4mm) crochet hook. **CHECK YOUR GAUGE. Use any size hook to obtain specified gauge.**

**NOTES:** Chart shows Tss return pass of each row only.

Each vertical line on each row on chart represents a vertical bar of an afghan st.

Each dot on chart represents ch-3 for picot.

### Special Abbreviations:

**Tss (Tunisian simple stitch)** = One row of Tunisian simple stitch is worked in two steps as follows:

**Forward Pass (step 1):** Sk first vertical bar; \*insert hook under next vertical bar, yo and draw up a lp; repeat from \* across. **Return Pass (step 2):** Yo and draw through one lp on hook; \*yo and draw through 2 lps on hook; repeat from \* until only one lp remains on hook (one row of Tss complete).

**Long dc** = Yo, insert hook under specified st, yo and draw up a lp to height of row in work, [yo and draw through 2 lps on hook] twice.

**Beginning joint st** = ch 2, skip next st, yo, insert hook in next st, yo and draw up a lp to height of ch-2, yo and draw through all lps on hook.

**Joint st** = Yo, insert hook in same st where last lp was drawn up, yo and draw up a lp to height of ch-2, sk next st, yo, insert hook in next st, yo and draw up a lp to height of ch-2, yo and draw through all 5 lps on hook.

**Cluster (cl)** = [yo, insert hook in specified st, yo and draw up a lp to height of ch-2] twice, yo and draw through all lps on hook.

**Beginning cluster (beginning cl)** = Ch 2, yo, insert hook in same sp as joining, yo and draw up a lp to height of ch-2, yo and draw through all lps on hook.

### CENTER PANEL

With **A** and afghan hook, ch 40.

**Row 1:** Insert hook in 2nd ch from hook, yo and draw up a lp; \*insert hook in next ch, yo and draw up a lp; repeat from \* across – 40 lps on hook. Work Tss return pass – 40 Tss.

**Rows 2-5:** Work Tss forward pass and return pass.

**Row 6:** Work Tss forward pass – 40 lps on hook. For Tss return pass: yo and draw through one lp on hook, [yo and



TIMELESS TUNISIAN BLANKET | CROCHET

draw through 2 lps on hook] 19 times; ch 3 to be formed into picot on forward pass of next row; [yo and draw through 2 lps on hook] 20 times – 39 Tss and 1 Tss with picot.

**Row 7:** Work Tss forward pass, holding ch-3 lp toward front to form picot – 40 lps on hook. For Tss return pass: yo and draw through one lp on hook, [yo and draw through 2 lps on hook] 18 times; ch 3 for picot, [yo and draw through 2 lps on hook] twice; ch 3 for picot, [yo and draw through 2 lps on hook] 19 times – 38 Tss and 2 Tss with picots.

Follow each row on chart from A to D. Working Tss forward pass as before and starting with row 8 of chart for Tss return pass, follow chart until Tss return pass of row 23 is completed, then repeat Rows 6-23 twelve times more, Rows 6-14 once and Row 2 five times more.

**Last Row:** Sk first vertical bar, sl st in next vertical bar and in each vertical bar across. Fasten off.

**NARROW PANELS (make 2 panels each with B, C and D)**

With appropriate color yarn and afghan hook, ch 20.

**Row 1:** Insert hook in 2nd ch from hook, yo and draw up a lp; \*insert hook in next ch, yo and draw up a lp; repeat from \* across – 20 lps on hook. Work Tss return pass – 20 Tss.

**Rows 2-5:** Work Tss forward pass and return pass.

**Row 6:** Work Tss forward pass – 20 lps on hook. For Tss return pass: yo and draw through one lp on hook, [yo and draw through 2 lps on hook] 9 times; ch 3 to be formed into picot on forward pass of next row; [yo and draw through 2 lps on hook] 10 times – 19 Tss and 1 Tss with picot.

**Row 7:** Work Tss forward pass, holding ch-3 lp toward front to form picot – 20 lps on hook. For Tss return pass: yo and draw through one lp on hook, [yo and draw through 2 lps on hook] 8 times; ch 3 for picot, [yo and draw through 2 lps on hook] twice; ch 3 for picot, [yo and draw through 2 lps on hook] 9 times – 18 Tss and 2 Tss with picots.

Follow each row on chart from B to C. Working Tss forward pass as before and starting with row 8 of chart for Tss return pass, follow chart until Tss return pass of row 23 is completed, then repeat rows 6-23 twelve times more, Rows 6-14 once and row 2 five times more.

**Last Row:** Sk first vertical bar, sl st in next vertical bar and in each vertical bar across. Fasten off.

**PANEL BORDER**

**Row 1:** With crochet hook and right side facing, join D with sl st in lower-right-hand corner of any panel; working across long edge, ch 1, sc in corner, sc in end st of next

row; \*long dc under 4th afghan st bar below next end st; sk end st behind long dc, sc in end st of next 3 rows; repeat from \* across, ending with sc in end st of last 2 rows – 253 sts. Fasten off. Do not turn.

**Row 2:** With right side facing, join C with sl st in first sc, ch 1, sc in back lp of same sc, sc in back lp of next 2 sts; \*long dc under 3rd afghan st bar below next st, sk st behind long dc, sc in back lp of next 3 sts; repeat from \* across, ending with sc in back lp of last 5 sts. Fasten off. Do not turn.

**Row 3:** With right side facing, join B with sl st in first sc, ch 1, sc in back lp of same sc, sc in back lp of next 3 sts; \*long dc under 2nd afghan st bar below next st, sk st behind long dc, sc in back lp of next 3 sts; repeat from \* across, ending with sc in back lp of last 4 sts. Fasten off. Do not turn.

**Row 4:** With right side facing, join A with sl st in first sc, ch 1, sc in back lp of same sc, sc in back lp of next 4 sts; \*long dc under first afghan st bar below next st, sk st behind long dc, sc in back lp of next 3 sts; repeat from \* across. Fasten off.

Work Rows 1-4 of Panel Border across other long edge of same panel. Work Panel Border on both long edges of each remaining panel.

**JOINING**

With lower edge of each panel at same end and right sides facing, join panels along long edges in following order: D, C, B, A, B, C, D. To join panels: Place first two panels side by side. Join D with sl st in lower-right-hand corner of first panel. Working loosely throughout, sl st in back lp of same st as joining; \*sl st in back lp of corresponding st on second panel, sl st in back lp of next st on first panel; repeat from \* across. Fasten off.

**EDGING**

**Round 1:** With crochet hook and right side facing, join D with sl st in upper-right-hand corner; working in sts of Panel Border and in end sts of rows along narrow edge; work beginning joint st, ch 1; \*work joint st, ch 1; repeat from \* across to next corner; work cl in corner, ch 1; repeat from \* around, working joint sts in back lp of sts along Panel Border. Join with sl st in top of beginning joint st. Fasten off.

**Round 2:** Join C with sl st in last ch-1 sp made; work beginning cl; ch 1; \*work joint st in same sp where last lp was drawn up and in next ch-1 sp; ch 1; repeat from \* across to next corner, working end of last joint st in ch-1 sp before next cl; work cl in same sp where last lp was drawn up, ch 1, joint st in same sp where last lp was drawn up



**TIMELESS TUNISIAN BLANKET | CROCHET**

and in next ch-1 sp for corner, ch 1\*\*; cl in same sp where last lp was drawn up, ch 1; repeat from \* around, ending final repeat at \*\*. Join with sl st in top of beginning cl. Fasten off.

**Round 3:** With B, work same as Round 2.

**Round 4:** With A, work same as Round 2.

**FINISHING**

Weave in all ends.

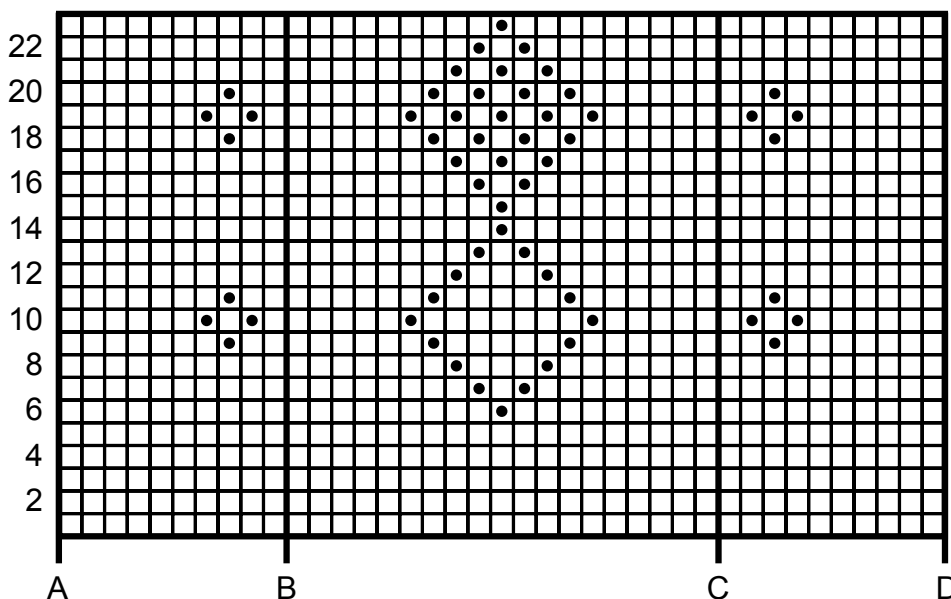


**RED HEART® “Super Saver®”,**  
Art. E300, 7oz/198g, 64yds/333m

**Abbreviations:** **ch** = chain; **dc** = double crochet;  
**lp(s)** = loop(s); **sc** = single crochet; **sk** = skip; **sl st** = slip stitch; **st(s)** = stitch(es); **yo** = yarn over; \* Repeat directions following \* as many times as indicated; [ ] = Work directions inside brackets as many times as indicated.

**CHART KEY**

- | = Vertical bar of tss (Tunisian simple stitch)
- = Ch-3 picot



**CHART**

CHART SHOWS SECOND HALF OF ROWS ONLY.