



CROCHET | SKILL LEVEL: **EASY**

## ABBREVIATIONS

<b>Approx</b> =	<b>Pat</b> = Pattern	<b>Sl st</b> = Slip stitch
Approximately	<b>Rep</b> = Repeat	<b>St(s)</b> = Stitch(es)
<b>Beg</b> = Beginning	<b>Rnd(s)</b> = Round(s)	<b>WS</b> = Wrong side
<b>Ch</b> = Chain(s)	<b>RS</b> = Right side	
<b>Cont</b> = Continue(ity)	<b>Sc</b> = Single crochet	

## MEASUREMENTS

Approx 12" x 14" [30.5 x 35.5 cm], excluding strap.

## GAUGE

13 sc and 14 rows = 4" [10 cm].

## INSTRUCTIONS

### Notes:

- Bag is worked in a continuous spiral.
- **Do not** join at end of rnds.
- Place marker on first st of rnd and move marker each rnd to keep place.

## BAG

With A, ch 40.

**1st rnd:** (RS). 1 sc in 2nd ch from hook. 1 sc in each ch to last ch. 3 sc in last ch. *Working in opposite side of foundation ch*, 1 sc in each ch to

last ch. 2 sc in last ch. **Do not** join. 80 sc.

**2nd rnd:** Ch 1. 1 sc in each sc around.

Rep 2nd rnd 10 times more.

Begin working Chart in rnds, (see page 2) noting each square of chart is equal to 1 sc, *reading rnds from right to left* and noting 16-st rep will be worked 5 times around. Carry color not in use across top of entire previous rnd and work sts around it. Carry both colors up WS of work.

After 26 rnds of Chart are complete, cont as follows.

**Next 12 rnds:** With B, ch 1. 1 sc in each sc around.

**Final rnd:** Sl st to next sc. Fasten off.

## MATERIALS

Lily® Sugar'n Cream® (2.5 oz/70.9 g; 120 yds/109 m)

**Contrast A** Warm Brown (01130)      **2 balls or 218 yds/200 m**

**Contrast B** Ecu (00004)      **2 balls or 181 yds/166 m**

Size U.S. H/8 (5 mm) crochet hook **or size needed to obtain gauge.**  
Stitch marker. Yarn needle.



**STRAP** (worked lengthwise)

With A, ch 85.

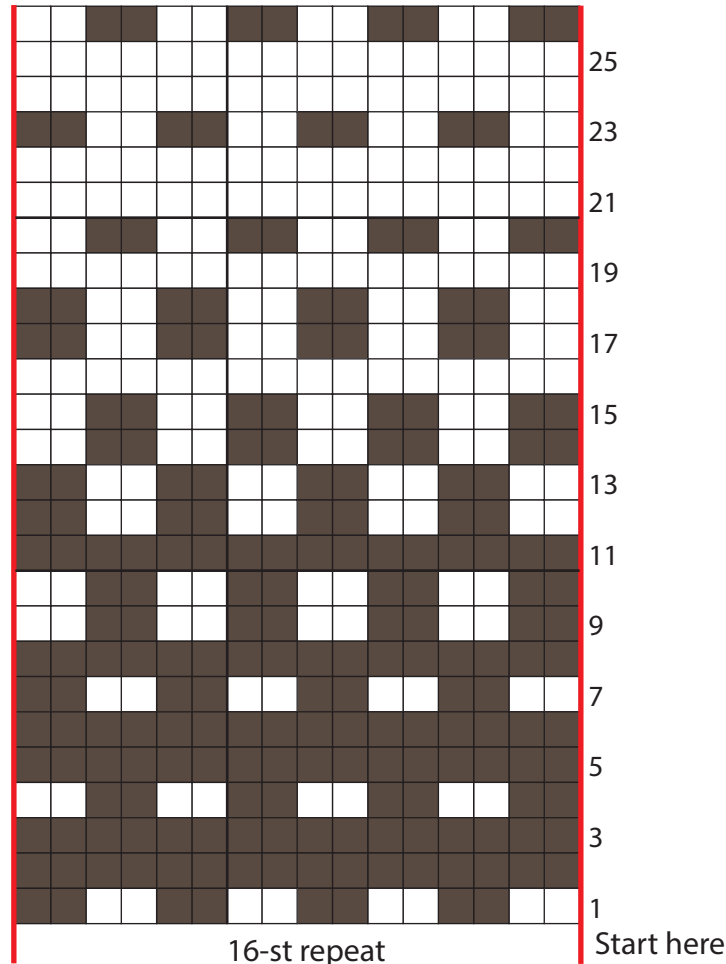
**1st row:** 1 sc in 2nd ch from hook.  
1 sc in each ch to end of ch. Turn.  
84 sc.

**2nd row:** Ch 1. 1 sc in each sc to  
end of row. Turn.

Rep 2nd row until work from beg  
measures 1½" [4 cm].

Fasten off.

Sew Strap to Bag as shown in  
photo.



Key

■ = Contrast A

□ = Contrast B

