



CROCHET | SKILL LEVEL: EASY

## ABBREVIATIONS

<b>Approx</b> =	<b>Rep</b> = Repeat	<b>Sl st</b> = Slip stitch
Approximately	<b>Rnd(s)</b> = Round(s)	<b>St(s)</b> = Stitch(es)
<b>Beg</b> = Beginning	<b>RS</b> = Right side	<b>Tog</b> = Together
<b>Ch</b> = Chain(s)	<b>Sc</b> = Single crochet	<b>WS</b> = Wrong side

## MEASUREMENTS

Approx 5" x 10" x 6" [12.5 x 25.5 x 15 cm].

## GAUGE

18 sc and 20 rows = 4" [10 cm].

## INSTRUCTIONS

### Sides

With MC, ch 28.

**1st row:** (RS). 1 sc in 2nd ch from hook. 1 sc in each ch to end of chain. Turn. 27 sc.

**2nd row:** Ch 1. 1 sc in each sc to end of row. Turn.

Rep last row until work from beg measures 5" [12.5 cm], ending on a WS row.

**Next row:** (RS). (Fold line). Ch 1. Working in back loops only, 1 sc in each sc to end of row. Turn.

**\*\*\*Next row:** Ch 1. Working in both loops, 1 sc in each sc to end of row. Turn.

Rep last row until work from last fold line measures 10" [25.5 cm], ending on a WS row.\*\*\*

**Next row:** (RS). (Fold line). Ch 1. Working in back loops only, 1 sc in each sc to end of row. Turn.

**Next row:** Ch 1. Working in both loops, 1 sc in each sc to end of row. Turn.

Rep last row until work from last fold line measures 5" [12.5 cm], ending on a WS row.

Rep from \*\*\* to \*\*\* once more.

**Next row:** (RS). (Joining row). Place foundation ch behind last row with WS of work tog. Ch 1. Working through both thicknesses, 1 sc in each sc across. Fasten off.

## MATERIALS

Lily® Sugar'n Cream® (2.5 oz/70.9 g; 120 yds/109 m)

**Main Color (MC)** Soft Ecru (01004) **3 balls or 300 yds/274.5 m**

**Contrast A** Hot Green (01712) **1 ball or 5 yds/4.5 m**

**Contrast B** Hot Pink (01740) **1 ball or 5 yds/4.5 m**

**Contrast C** Hot Purple (01317) **1 ball or 5 yds/4.5 m**

Size U.S. E/4 (3.5 mm) crochet hook **or size needed to obtain gauge.**  
Yarn needle.

## Base

Ch 46.

**1st row:** (RS). 1 sc in 2nd ch from hook. 1 sc in each ch to end of chain. Turn. 45 sc.

**2nd row:** Ch 1. 1 sc in each sc to end of row. Turn.

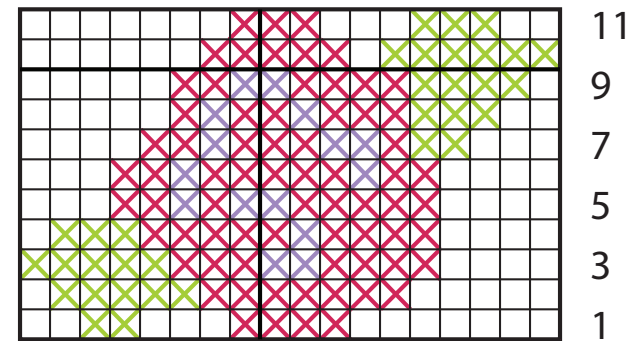
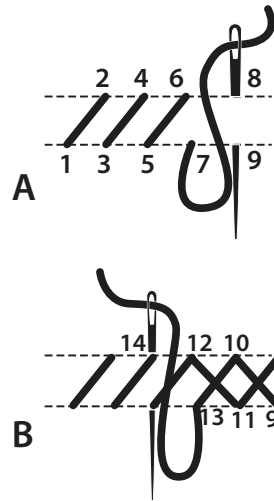
Rep last row until work from beg measures 5" [12.5 cm], ending with a WS row. **Do not** fasten off.

**Join Base to Sides:** Place lower edge of Sides behind Base with WS of work tog, aligning corners of Base with fold lines and joining row of Sides.

**Next rnd:** (RS). Ch 1. Working through both thicknesses, work 1 rnd of sc around all 4 sides of Base. Join with sl st in first sc. Fasten off.

## FINISHING

Fold over sides of Basket to form a Brim as shown in photo. Placing chart slightly offset from center (see photo), cross stitch floral motif on Brim of Basket.



### Key

- = Contrast A
- = Contrast B
- = Contrast C

