



CROCHET | SKILL LEVEL: EASY

ABBREVIATIONS

Beg = Beginning
Ch = Chain(s)
Dc = Double crochet
Rep = Repeat
Rnd(s) = Round(s)

Sc = Single crochet
Sc2tog = Draw up a loop in each of next 2 stitches. Yoh and draw through all loops on hook.

Sl st = Slip stitch
Sp(s) = Space(s)
St(s) = Stitch(es)
Yoh = Yarn over hook

MEASUREMENT

To fit 500 ml regular mouth Mason jar with 2¾" [7 cm] diameter opening.

GAUGE

13 sc and 14 rows = 4" [10 cm].

INSTRUCTIONS

Notes:

- Join all rnds with sl st to first st.
- Ch 3 at beg of rows counts as dc.

BASE

Ch 2. See diagram on page 2.

1st rnd: 7 sc in 2nd ch from hook. Join. 7 sc.

2nd rnd: Ch 1. 2 sc in each sc around. Join. 14 sc.

3rd rnd: Ch 1. *1 sc in next sc. 2 sc in next sc. Rep from * around. Join. 21 sc.

4th rnd: Ch 1. *2 sc in next sc. 1 sc in each of next 2 sc. Rep from * around. Join. 28 sc.

5th rnd: Ch 1. *1 sc in each of next 2 sc. 2 sc in next sc. 1 sc in next sc. Rep from * around. Join. 35 sc.

6th rnd: Ch 1. *Working in back loops only*, 1 sc in each sc around. Join.

BODY

1st rnd: Ch 3. *Working into both loops*, 1 dc in next sc. Ch 3. Skip next 3 sc. *1 dc in each of next 2 sc. Ch 3. Skip next 3 sc. Rep from * around. Join. 14 dc and 7 ch-3 sps.

2nd rnd: Ch 3. 1 dc in next dc. Ch 3. Skip next ch-3 sp. *1 dc in each of next 2 dc. Ch 3. Skip next ch-3 sp. Rep from * around. Join.

3rd rnd: Ch 3. 2 dc in sp between first dc and next dc. Ch 2. Skip next

MATERIALS

Lily® Sugar'n Cream® (2.5 oz/70.9 g; 120 yds/109 m)

Jute (00082) or Tea Rose (00042)

1 ball or 38 yds/35 m

Note: 1 ball will make approx 3 Vases.

Size U.S. H/8 (5 mm) crochet hook or size needed to obtain gauge.
 Yarn needle.



ch-3 sp. *3 dc in sp between next 2 dc. Ch 2. Skip next ch-3 sp. Rep from * around. Join. 21 dc and 7 ch-2 sps.

4th rnd: Sl st in next dc. Ch 3. 2 dc in same dc as sl st. Skip next dc. *Ch 2. Skip next ch-2 sp. Skip next dc. 3 dc in next dc. Skip next dc. Rep from * to last ch-2 sp. Ch 2. Skip next ch-2 sp. Join.

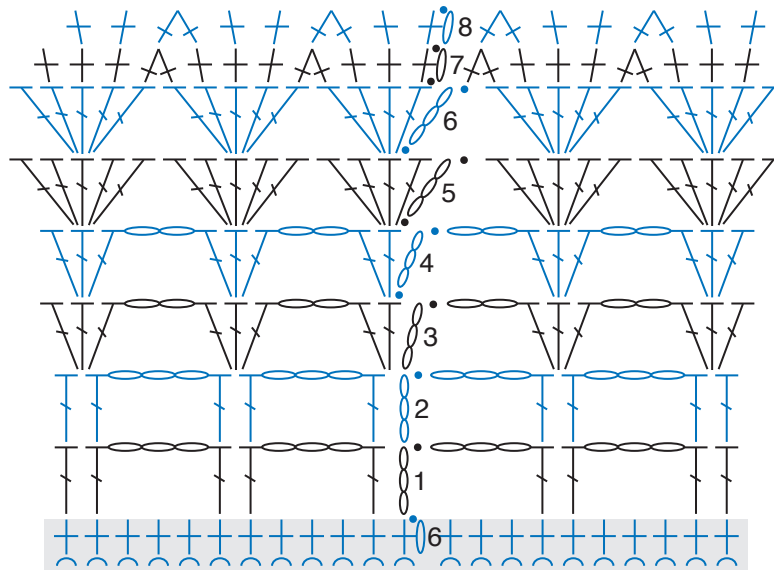
5th rnd: Sl st in next dc. Ch 3. 4 dc in same dc as sl st. *Skip next dc. Skip next ch-2 sp. Skip next dc. 5 dc in next dc. Rep from * to last dc and ch-2 sp. Skip next dc and ch-2 sp. Join. 35 dc.

6th rnd: Sl st in each of next 2 dc. Ch 3. 4 dc in same dc as last sl st. *Skip next 4 dc. 5 dc in next dc. Rep from * to last 2 dc. Skip last 2 dc. Join.

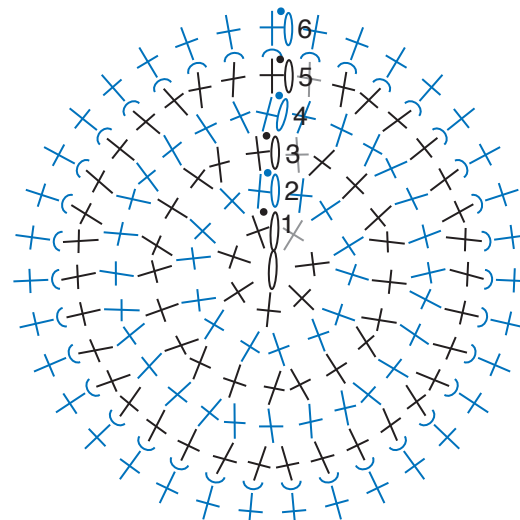
Without breaking yarn, place jar inside Vase.

7th rnd: Sl st in next dc. Ch 1. 1 sc in same dc as sl st. 1 sc in each of next 2 dc. *Sc2tog. 1 sc in each of next 3 dc. Rep from * to last dc. Sc2tog, working into last dc and first skipped dc of rnd. Join. 28 sc.

8th rnd: Ch 1. *1 sc in each of next 2 sc. Sc2tog. Rep from * around. Join. 21 sc. Fasten off.



BODY



BASE

STITCH KEY

- = chain (ch)
- = slip stitch (sl st)
- † = single crochet (sc)
- ⌋ = double crochet (dc)
- △ = single crochet 2 together (sc2tog)
- ⌋ = worked in back loop only

