



## MATERIALS

**Red Heart® Super Saver™** (7 oz/198 g; 364 yds/333 m)  
Oatmeal (0326) **4 balls**

Size U.S. H/8 (5 mm) crochet hook **or size needed to obtain gauge.**



CROCHET | SKILL LEVEL: **EASY**

## ABBREVIATIONS

**Approx** = Approximately

**Beg** = Begin(ning)

**Ch** = Chain(s)

**Dc** = Double crochet

**Dtr** = (Yoh) 3 times and draw up a loop in next stitch. (Yoh and draw through 2 loops on hook) 4 times – double treble crochet made.

**Pat** = Pattern

**Rep** = Repeat

**Rnd(s)** = Round(s)

**RS** = Right side

**Sc** = Single crochet

**Sl st** = Slip stitch

**St(s)** = Stitch(es)

**Tr** = Treble crochet

**WS** = Wrong side

**Yoh** = Yarn over hook

## MEASUREMENTS

Approx 38" x 46" [96.5 x 117 cm].

## GAUGE

13 sc and 14 rows = 4" [10 cm]

## INSTRUCTIONS

**Note:** Ch 4 at beg of row counts as tr.

Ch 117.

See diagram on page 2.

**1st row:** (WS). 1 sc in 2nd ch from hook. 1 sc in each ch to end of chain. Turn. 116 sc.

**2nd row:** Ch 4. \*Skip each of next 2 sc. 1 dtr in next sc. Working

**behind** dtr, 1 tr in each of 2 skipped sc. Skip next sc. 1 tr in each of next 2 sc. Working in **front** of 2 tr, 1 dtr in skipped sc. Rep from \* to last sc. 1 tr in last sc. Turn.

**3rd row:** Ch 1. 1 sc in each st across. Turn.

**4th row:** Ch 4. \*Skip next sc. 1 tr in each of next 2 sc. Working in **front** of 2 tr, 1 dtr in skipped sc. Skip each of next 2 sc. 1 dtr in next sc. Working **behind** dtr, 1 tr in each of 2 skipped sc. Rep from \* to last sc. 1 tr in last sc. Turn.

**5th row:** Ch 1. 1 sc in each st across. Turn.

Rep 2nd to 5th rows for pat until work from beg measures approx 42" [106.5 cm], ending on a 5th row.

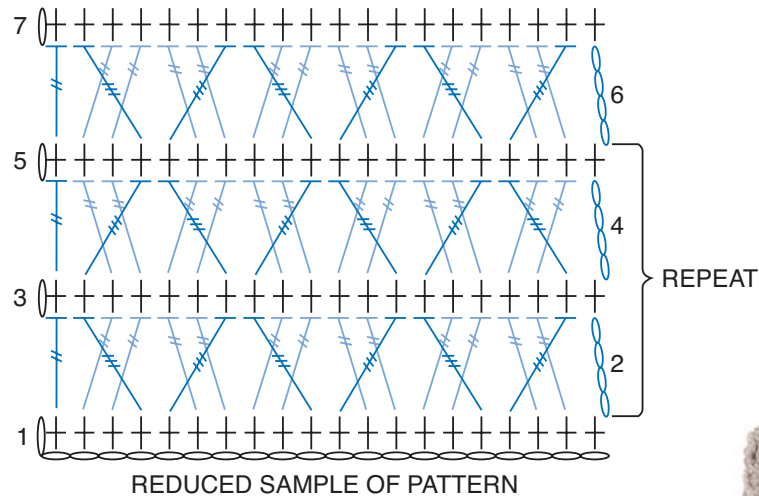
Fasten off.

**Border:** With RS facing, join yarn with sl st to any corner.

**1st rnd:** Ch 3 (counts as dc). Work 1 rnd of dc evenly around all side edges, working 5 dc in each corner. Join with sl st to top of ch 3.

**2nd rnd:** Ch 3 (counts as dc). 1 dc in each dc around, working 5 dc in each center dc of each 5-dc corner group. Join with sl st to top of ch 3.

Fasten off.



#### STITCH KEY

- = chain (ch)
- ⊥ = single crochet (sc)
- ⊥ = treble crochet (tr)
- ⊥ = double treble crochet (dtr)

